

World On the Move

BUILDING AN INCLUSIVE COMMUNITY OF MIGRATION SCHOLARS



I recently attended and presented at the 2025 Center for Migration Studies of New York's Academic and Policy Symposium (<https://cmsny.org/event/2025-academic-policy-symposium/>). One of the keynote and award winners was Dr. Ellen Percy Kral, William R. Kenan Jr. Professor Emerita of geography and environmental studies at Colgate University, who spoke compellingly of the need for a just migration policy. One component involves what she termed as "building an inclusive community of migration scholars." This is a view I share and indeed what I hope to cultivate as chair for the International Migration section. I'm so honored and grateful to have been entrusted to serve you in this capacity.

Despite myriad attacks on DEI across the U.S., I continue to believe that inclusion is important and that sociologists have a role to play in speaking to this importance. I think about inclusion as section chair in many ways. First, I was impressed by the richness of our section sessions at the 2025 ASA Annual Meeting in Chicago on topics as varied as Right-wing Politics and Immigrant Conservatism, MENA Global Migration and Identities, and Environment, Climate Change, and Mobility (this is in addition to a session on Race and Global Migration that we had to unfortunately cancel but hope to continue the conversation soon). All of these sessions, as well as our section roundtables, were well attended. I'm excited to be a part of a section that is not just focused on traditional theoretical frameworks and paradigms but also engaged in bringing the study of international migration and migrants to *new* questions and societal developments.

So, inclusion is relevant in terms of what we study and how we study and creating a big tent for sociologists who see themselves as scholars of migration – those who study more "traditional" topics and those who study more "innovative" or critical ones. For example, as someone whose empirical work has largely been outside of the U.S., I have to admit I have not already felt included in the subfield of sociology of migration which historically has centered the U.S. and its borders. I am grateful to those in this section who have welcomed and encouraged me since I was a graduate student and I'm committed to providing the same to others during my tenure as chair.

FALL 2025

Volume 31, No. 3

Edited by Blanca A. Ramirez,
Chen Liang & Roxanne Corbeil,
IM Section Editors

In this Issue

Message from Chair

Section Officers

ASA 2026 IM Paper
Sessions

Section Member Essays

Dr. Greg Prieto Remembrance

Section Committees

2025 Section Award Winners

2026 Call for Awards

Member News

Recent Publications

New Books

STAY CONNECTED

Follow us on BlueSky
[@ASAmigration](#)

Check out our website
<https://asamigrationsection.wordpress.com/>

email us at:
asa.int.mig@gmail.com

Also related to inclusion, I would be remiss if I did not note that, as far as we know, I am the first Black American (and first Black woman) to be chair of this section. I realized this during the 30th anniversary of our section which we celebrated at ASA 2024. While it is a bit strange to have “firsts” in 2025, I am nonetheless especially honored to lead our section in this way.

As this is my first newsletter as section chair, I want to thank past section chairs, Jody Agius Vallejo and Zai Liang for your leadership, as well as outgoing section council members, Ariela Schachter and Jaeun Kim, and our outgoing graduate student representative, Irina Chukhray, for all their hard work and dedication to our section. I look forward to working with council, as well as members of all our award committees; Diversity, Equity, Inclusion, and Justice subcommittee, ASA 2026 mini-conference subcommittee, and Mentoring and Professionalization subcommittee this year.

Looking forward to ASA 2026, I want to thank chair-elect Elizabeth Aranda, Caitlin Patler, and Molly Fee for assembling our section sessions. The CFP is now open on the ASA website and more information on these sessions can be found on page 3. We also are planning a mini-conference on Friday August 7 (the day before ASA) and I will share further details on this soon. In addition, given the present fascistic regime that has shaped immigration enforcement and deportation, our expertise as migration scholars is increasingly needed. We will use our mini-conference, in part, to address what others have done and what we can do in this present moment to respond. Part of this involves thinking beyond reaching solely academic audiences to enact change, which some of our members have been quite successful in doing.

Thanks as well to our newsletter team for putting together an excellent newsletter: Blanca A. Ramirez, Chen Liang, and Roxanne Corbeil. Happy reading and please be touch with your thoughts and ideas for our section.

Jean Beaman
Chair, International Migration section
CUNY Graduate Center

IM Section Officers

CHAIR

Jean Beaman
CUNY Graduate Center

PAST CHAIR

Zai Liang
SUNY Albany

COUNCIL MEMBERS

Maria Abascal,
New York University

Andrew Le,
Arizona State University

Katherine Jensen
University of Wisconsin-Madison

Stephanie L Canizales
UC Berkeley

WOM EDITORS

Chen Liang
National Taiwan University

Blanca A. Ramirez
The University of Texas at Austin

Roxanne Corbeil
University of California, Los Angeles

INCOMING OFFICERS 2025-26

Chair-Elect:

Elizabeth M. Aranda
University of South Florida

Secretary/Treasurer:

Sharon M. Quinsaat
Grinnell College

Council Members:

Deisy Del Real
University of Southern California

Blanca A. Ramirez
University of Texas at Austin

Student Representative:

Melissa Hurtado Nuez
Rice University

At a Glance: Call for Papers
ASA 2026 International Migration Section

**Beyond Asylum and Resettlement: Diverse
Modes of Refugee Migration**

(Session Organizer) Samuel Dinger
New School for Social Research

**From Youth to Elders: The Social Worlds of
Immigrants Across the Lifespan**

(Session Organizers) Emine Fidan Elcioglu
University of Toronto
Vanessa Delgado
Washington State University

Racialization and Immigration Enforcement

(Session Organizer)
Luis E. Tenorio
Colby College

For full information, visit:
<https://www.asanet.org/annual-meeting/call-for-papers-extended-abstracts/section-calls>

**Return Migration in the Era of
Enforcement: Uncertainty and
Transnational Lives**

(Session Organizers) Saeed Ahmad
Utah State University
Erin Trough Hofmann
Utah State University

**The Increasing Significance of Local
Context in Immigrant Integration**
(Session Organizer) Francisco Lara-Garcia
Hofstra University

**International Migration section Refereed
Roundtables**

(Session Organizers) Marta Ascherio
Illinois State University
Andrea M. Voyer
Stockholm University

**International Migration section open call
paper session**

(Session Organizers) Jesse Yeh
Northwestern University



*apply
apply
apply*

ETHNIC AND RACIAL STUDIES

The interdisciplinary forum on all aspects of race, ethnicity and migration studies



High impact journal at the cutting edge of research in its key areas of interest.



Cutting edge empirical and theoretical contributions are welcomed from scholars at any career stage.



Articles focusing on South American countries are particularly sought.

FLEXIBILITY

- Standard articles – 9000 words
- Review articles – 12000 words
- Guest editorials – 5000 words
- Format Free
- [24/7 online submission](#)
- 2 months to 1st decision
- [Easy formatting](#)
- Dedicated social media support

AIMS & SCOPE:

Ethnic and Racial Studies aims to be the leading international journal for the analysis of the role of race, racism, ethnicity, migration and forms of ethno-nationalism. These social phenomena are at the heart of many of the major social and political issues in the modern world. As the leading journal in these areas we seek to provide an interdisciplinary academic forum for the presentation of original research and theoretical analysis, drawing particularly on sociology, social policy, anthropology, political science, international relations, geography, history, social psychology and cultural studies.

Expert editorial support / [contact Celia or Amanda](#)

ethnic@surrey.ac.uk

[f/ERSjournal](https://www.facebook.com/ERSjournal)

[@ERSjournal](https://twitter.com/ERSjournal)

tandfonline.com/ers

Research Justice and Collective Care in an Era of Intensified Immigrant Exclusion (Con't)

By Laura E. Enriquez, University of California, Irvine

Together we created a traveling art exhibit that centers healing. We create art that unpacks how immigration policies have shaped our identities, feelings of belonging, opportunities, and grief—work we've displayed at several university campuses.

This approach has proven transformative. It enables participant-collaborators to control and rearticulate their own narratives. Team members are building long-term community with each other and provided emotional and tangible support when ICE raids began in Southern California. The exhibit literally takes up space on campus, signaling that immigration-impacted students belong. Our art workshops provide spaces to process immigration-related exclusion and find community and affirmation.

Our current political moment has required me to pause, affirm my values, and let them guide my research. I didn't imagine I'd be writing poems, hosting art exhibits, or finding ways for students to take up space on campus—but that's what students asked for. Sometimes the most rigorous methodology is simply responding to what our students and communities need.

I feel like we're Sisyphus and the rolling ball
It feels transactional
because I'm paying you
but if I don't pay you
it feels even more extractive
Fuck
you lose either way

Is this healing?
Feelings came up
Next thing you know
They're crying
Oh fuck
I made them cry
Not made them
But
My questions brought up feelings that made them cry
Even when the topic didn't seem to me like it was going to bring up
Trauma or pain
It did
I can't see the future.
I forced myself to not cry
That might inflict harm on them
Because now they have to make me feel better
I wasn't there for that.

Making people cry?
Is this a drive by?
Am I one of those sociologists who extract?
Make a profit from pain?
Dip in and out?

You can't force friendship on people
When we're sharing space and time
it is genuine
It's just that that relationship has been meant to be
short
even if our relationship is just that,
there was something special that came out of it
meaningful
honor their experience
tell their story

Am I doing the same thing that I critique other people for doing?
Every time I spiral
I try to just remember
who I am
where I want to go
that this is bigger than me
I have a solid foundation.
Solid values.

SECTION MEMBER ESSAYS

Interview with Peggy Levitt, 2025 Distinguished Career Award Recipient

Edited for clarity and brevity by Blanca A. Ramirez and Roxanne Corbeil

Reflecting on your career, what pivotal research project do you feel most shaped your contributions to migration to research?

I've spent a lot of my career trying to get people to open up the lens of understanding immigrant incorporation and sending community development. I've talked about a transnational lens, which is a multi-sided, multi-scalar lens. And I still believe that we can't really understand what's going on in the sending country or the receiving country if we don't put that in the context of a community that is constituted across space. That's how I understand migration.

When I was first starting out, most people were talking about economic remittances. I've always been interested in what I now talk about as the relationship between migrating people and migrating culture. Social remittances are really about the migration of ideas and practices and identities and social capital. So, I often joke that on my tombstone will be, "she coined the term social remittances." Even though I've done lots of other things, that's what many people still know me for.



How have you seen the field of migration studies evolve over the course of your career? What changes do you hope to see in the field in the next decade?

I think that it's much more diverse and the idea of assimilation as the main goal has been problematized, but I still think we're pretty U.S.-centric. A lot of what I've been doing in the past 10 years has been helping to create this network called the [Global \(De\)Center](#). The idea is to really open up the lens, open up the toolkit to understand our default categories, which in this case is basically working in English or Spanish—mostly English—and having the U.S. as what we're comparing to.

So that, I think, is where we really need to go. First of all, there are migration scholars around the world for whom these categories don't work. The terms that we use, the categories that we use, the expectations about permanent migration don't make any sense in many parts of Africa, let's say. Or that there would be all these institutions that could facilitate formal citizenship. You need a whole new set of concepts, really, and theories. How can we open up our eyes and open up our ears and learn that? What insights can we gain? What can we learn about the assumptions in our own theoretical frameworks that need to be questioned?

The Global (De)Center is all about not just decentering ideas. It's also about showing up to the research or the discussion and saying, "What kind of assumptions am I bringing here? How do my default categories blind me to this conversation and not let me enter into it with a beginner's mind?"

SECTION MEMBER ESSAYS

Interview with Peggy Levitt, 2025 Distinguished Career Award Recipient (Con't)

Edited for clarity and brevity by Blanca A. Ramirez and Roxanne Corbeil

What advice would you give to emerging scholars or practitioners in this moment who aspire to make a lasting impact in the migration field?

I really think that you have to work on what you feel passionate about. I don't think it works to kind of choose strategically or instrumentally a certain question or area because you feel like that might be the next cutting edge thing. You have to be brave. Hopefully, you have mentors who are allowing you to be brave, which I know doesn't always happen. You have to find your own voice, not have them make you over in their own image, which is all too common, right?

I also think that the perfect is the enemy of the good. We've spent a lot of time kind of saying yes or no, or good or evil and I think it's part of what's gotten us to this particular political moment. I really believe that there are paradoxes in all kinds of choices. A policy choice is almost certainly a matter of what is the choice that involves the most good versus the least evil, but it's never a pure choice. If we would just admit that to ourselves and say, "OK, what do I think about this, and what am I willing to compromise on?" And then figure out the way that you can talk to the people who are going to oppose whatever configuration of truth you've put together. It's not just about deciding what you think, your own opinion, but it's about figuring out how to frame it and talk about it so that other people can hear it. I think we're really great at teaching ourselves and our students how to critique and we get a failing for how to chart a positive way forward. And that's one of the things that at the Global (De)Center we ask ourselves to do. And that's what I'm trying to do in the classroom now. Yes, let's say what we think is wrong, but let's say how we think we could do it right. Not only that, how could we talk to others who don't agree with us so that we can get somewhere?

Also, just to take care of yourselves because it's a long haul. It's a marathon, it's not a sprint. And so how do you be resilient? How do you still feel hopeful? How do you get yourself through times when it doesn't feel hopeful?



SECTION MEMBER ESSAYS

Interview with Peggy Levitt, 2025 Distinguished Career Award Recipient (Con't)

Edited for clarity and brevity by Blanca A. Ramirez and Roxanne Corbeil

How do scholars without the security of tenure push forward this agenda?

I think everybody has a different role to play at the table. And it's up to us each at our different stages of this to step up. And so, yes, you [without tenure] cannot do this, what I'm doing. But it's my responsibility to try to help you get there, right? That's how I see it. And, at this point in my career, to move over so that other people can sit at the front of the table. And I don't have to lead, I don't have to be the director. I can sit at the table and if somebody asks me, "Do you want to help me to learn how to lead or can you help me learn how to write a scholarly article?" I can do that. I can use my resources to help other people, especially younger scholars who come from under-resourced institutions in unconnected countries. It's one thing to be doing this as a scholar from the Global South who's studied in Europe or North America and it's another thing to do it if you don't have those social networks. There are layers upon layers upon layers of inequality. I think we all have to think about, "OK, what can I do realistically at my stage in life? And how do I want to show up for that?"



“This is the time for solidarity, not for shaming or policing authenticity and who can talk about what. This is a time for just basic “Let's get those of us who see the world in a similar way, let's get together and fight for it.”

SECTION MEMBER ESSAYS

Welcoming new council member: *Blanca A. Ramirez*

I am honored to be joining the ASA International Migration Council this year. In previous years, I have been a section member, then a graduate representative, and then a newsletter editor.

I was drawn to this area of research because it gave me the words and the theories that long engulfed me in my experience growing up in California's Orange County immigrant communities. When I first took a Sociology class at California State University, Fullerton (CSUF), I remember feeling baffled. There was this whole language, theories, and intellectual discipline to describe and understand inequalities. Why did inequalities continue to exist?

It is a question I look at with much more empathy a decade into being a sociologist. Looking back, that early confusion became a catalyst for continuing to use the tools that Sociology offers to make sense of the world. And an inspiration to continue to find ways to apply this research.

While at CSUF, a friend, Christina Acosta (who is now a PhD student in Ethnic Studies at UCSD), casually mentioned the McNair program. I did not know what graduate school was, let alone a doctorate. Christina went out of her way to introduce me to the McNair leadership at the time, Dr. Patricia Literte.

When I became a McNair scholar, I received the opportunity to conduct my own research study under the direction of Dr. Devon Thacker Thomas. And I delved in headfirst. I bridged my interests in violence against women with my interests in migration by studying how immigrant women viewed intimate partner violence. That first research study did not just answer one set of research questions. It taught me that asking them was worthwhile.

This pursuit of asking questions to make sense of the world did not stop there. Outside of the university, another part of my life was shaping my understanding of nations, borders, and belonging. For much of my life I have been a proud *danzante* (colloquially, Aztec dancer) in Southern California. In it, I felt at home. I have joked that I have been invited to university campuses as a *danzante* long before these academic spaces invited me to their campus as an intellectual. I remember participating at an indigenous peoples event at UCI in elementary school. In undergrad, I was invited to participate in the Latino graduation at UCLA. Heck, I even participated in an initial blessing for an Ethnic Studies conference at Santa Ana Community College before I knew what a conference was. The only place where I got to be both part of the on-campus community and a *danzante* simultaneously was CSUF.

SECTION MEMBER ESSAYS

Welcoming new council member: Blanca A. Ramirez (cont'd)

Even in this very rooted space, the realities of immigration enforcement were never too far away. I have seen the hand of immigration enforcement fracture this beloved community of mine. When I was younger, I never quite understood or had the language for what was happening. A Fullerton danza leader's wife suddenly gone because something went wrong with her family sponsor case. A younger friend telling me how much he yearned for his mother back in Mexico but could not return. A beloved friend from a neighboring group in Santa Ana suddenly disappeared. I did not have the language for it then, just an ache of missing the face of a familiar friend.

Earlier this summer when the raids erupted in Los Angeles and Orange County, ceremonies and practices were cancelled, and those that remained open, did so behind carefully locked doors. A deep reminder that immigration enforcement upends social life in both visible and invisible ways.

I received my PhD from the University of Southern California, where I began to deeply research immigration enforcement in the United States today. I focus on understanding the social consequences of immigration enforcement. I initially explored this with immigrant families where I published two pieces: *Excluding Criminals or Mothers?* and *Anchoring Work.*

I then became interested in the work of immigration attorneys as a resource within a broader social landscape that shape where immigrants and their families can turn to when immigration issues arise. My first book, tentatively titled "Entrusted Dreams," focuses on the experiences of immigration attorneys who are on the frontlines of responding to immigration enforcement. Along the way, I also collaborated with Dr. Hajar Yazdiha to explore how immigrant rights organizations in the US South respond to an array of policies, including immigration enforcement. Work that consistently reminds me that immigration enforcement is also constantly being challenged in smaller and larger ways.

While my work continues to challenge and teach me about the social world, I am also deeply inspired by many other well-established sociologists who not only grapple with the theories, but also seek to make our work accessible and applicable. Notably, Dr. Manuel Pastor and Dr. Jody Agius Vallejo's Equity Research Institute has inspired me in this regard. I have written a piece with Mai Do on conducting community-engaged research as graduate students. Even now, in these moments, I am amazed by the ways scholarship is mobilized and communities are sustained like Dr. Amada Armenta at UCLA's Latino Policy & Politics Institute, Dr. Cristina Mora, Dr. Michael Muniz Rodriguez, and Dr. Nicholas Vargas hosting the Latinx Junior Scholars Program at the Latinx Research Center, Dr. Elizabeth Aranda and Dr. Elizabeth Vaquera's Im/migrant Well-being Scholar Collaborative, and Dr. Stephanie Canizales's Berkeley Interdisciplinary Migration Initiative.

Here at UT Austin, I am inspired by the leadership and work of Dr. Nancy Rodriguez and Dr. Michael Roy Hames-Garcia at the Latino Research Institute, Dr. Danielle Clealand, Dr. Angie Gutierrez, and Dr. Angela Ocampo's Proyecto Latino, and Dr. Becky Pettit's Initiative for Law, Societies, and Justice. Their work reminds me that migration scholarship is at its strongest when it is in conversation with other fields—law, racial justice, political participation, and community research, among others. Their work pushes me to think more expansively about how my own migration scholarship can be in conversation with these areas.

These communities, scholars, and experiences continue to shape the questions I ask and the commitments I bring to the field.

A Pioneering Lens on Surveillance, State Power, and Immigrant Life: Remembering Greg Prieto

BY NEDA MAGHBOULEH
UNIVERSITY OF BRITISH
COLUMBIA

Dr. Greg Prieto, a Professor in the Department of Sociology at the University of San Diego, was diagnosed with advanced cancer in March 2024 and died on October 13, 2025, at the age of 42. He was a longstanding member of the IM Section.



Greg Prieto and I attended the UC Santa Barbara Sociology grad program during the late-Bush/early-Obama era. As some may remember, surveillance was in the air. Looking back through our earliest emails with each other (before we even started grad school!), I found one he sent in June 2006 to a small group with the wry subject line: “Would all of the Foucauldians please stand up.” He was writing to share an *LA Times* tech column about the integration of GPS tracking into early cell phones and its implications for parents and children; this was one year before the iPhone debuted, when we were still carrying T-Mobile Sidekicks and other flip or slider phones. Even then, at age 22, Greg was attuned to what this nascent technology meant for surveillance and everyday freedom. He wrote to us with a blend of humor, exasperation, and political critique that was unmistakably him:

“Incidentally, I looked at my phone after reading this article and lo and behold, my phone is similarly equipped with a ‘position locator.’ Please turn yours off, and if you need any help, I can certainly try... Call me 661-4xx-xxxx. Channeling Marx and Wendy Brown, the public are necessarily at odds with government. We must always look at government with a minimum amount of critical regard. What the hell happened? We borrowed the government’s weapons systems and leveled them at our children.”

When I re-read this email now, nearly twenty years later, it is striking how clearly the seeds of his intellectual curiosity were already present. Before Greg became an ethnographer of policing, the racial state, and migrant vulnerability, he was already sensitized to the subtle, creeping infrastructures of surveillance and the freedoms they compromised. What changed over time was not his concern with power, but the multiple methods and frameworks through which he came to understand it: a shift from his youthful, critical-theory zeal to a grounded, inductive, people-centered approach that eventually defined his scholarship. Part of that was Santa Barbara, a place where many of us became accidental cultural sociologists and ethnographers, no matter what our actual subfields were.

The program encouraged us to study power as it appeared in ordinary settings and to take seriously the meanings people made in their everyday encounters with institutions. As Greg's cohort mate and lucky friend, I witnessed him absorb the ethos of that grad training and turn it into a grounded scholarly vision, one that would pioneer our knowledge of how immigrants and enforcement agents experience surveillance, state power, and the racial state from the ground up.

Out of these early curiosities emerged a distinguished career unfairly cut short; two decades of passionate research and teaching that reshaped how our field understands immigrant life under enforcement. It is no accident that his first ASA award winning book, *Immigrants Under Threat: Risk and Resistance in the Deportation Nation* (2018, NYU Press), opens with two inscriptions: one from Esmeralda, a primary interlocutor in his fieldwork ("Participation is the only thing that will save us,") and the other from Foucault: "Power is everywhere not because it embraces everything, but because it comes from everywhere." Greg's scholarship lived precisely in the space between those two lines—the grounded insights of the people living under surveillance and the theoretical recognition that power circulates through everyday practices. He showed that the threat of deportation does not silence immigrants so much as compel a spectrum of *material moorings* from quiet avoidance to selective engagement to outright activism. He insisted that immigration scholarship must take policing seriously, tracing how local law enforcement, Border Patrol, and legal institutions produce racialized vulnerabilities. And through his cultural and ethnographic lens, he illuminated the lived experiences of both immigrants *and* enforcement agents, demonstrating that understanding the racial state requires studying it from the ground up. Across his many solo-authored works and multiple collaborations, Greg grounded abstract debates in the everyday worlds of the people most shaped by them. His second monograph, *Myth and Reality in the U.S. Immigration Debate* (2020, Routledge), widened the lens, offering a rigorous, accessible synthesis of immigration research and public discourse perfect for classroom use. Greg always insisted that scholars have a civic responsibility. He never wrote at the communities he studied—he wrote *with* and *for* them.

Throughout his career, Greg pursued projects that were methodologically plural and always a step ahead. He published with our former UCSB professors, from a highly-cited paper on social movements and internet activism in *Mobilization* that came from his early RA work for Jenn Earl in her legendary "Earl Lab," to a widely read, post-tenure article at *American Sociological Review* with Victor Rios and Jonathan Ibarra on Latino stop-and-frisk. One of his most prescient contributions, however, came in a solo-authored 2015 *Latino Studies* article on Latino Border Patrol agents, which was an early, incisive analysis of how enforcement workers grapple with the heterogeneity of Latino/a racial identity and its relationship to state power.

Across all these projects, Greg's sociological commitments from our UCSB days stayed constant. He theorized inductively. He followed people through their everyday practices, letting their experiences shape the analytic categories. He approached migrants, police officers, immigration enforcement agents, and movement actors with humility, as people embedded in institutional contexts, navigating constraints, and making choices.

Greg's contributions to the field were matched by his generosity as a colleague. He worked tirelessly behind the scenes, and especially for junior scholars, stepping in quietly, with no expectation of recognition. He wrote book reviews, offered careful feedback, and supported others' projects with sincerity and warmth. He was intellectually serious but never self-serious, sharp-minded but unfailingly kind.

In the weeks since he passed, I have read back through the 345 emails Greg and I exchanged over nineteen years. The one from June 2006 about cellphone GPS now reads like a prologue: Greg alerting us, even then, to the technologies and institutions that quietly structure everyday life. What he did over the next two decades was transform that early instinct into a grounded, ethnographic practice—one that listened closely, theorized inductively, and insisted that power must be understood from below. The field is different because he asked those questions, and different because of how he chose to answer them. Greg Prieto's absence is deeply felt. But the lens he gave us on surveillance, state power, and immigrant life remains.

IM SECTION COMMUNICATIONS TEAM

**Blanca Ramirez, Editor**

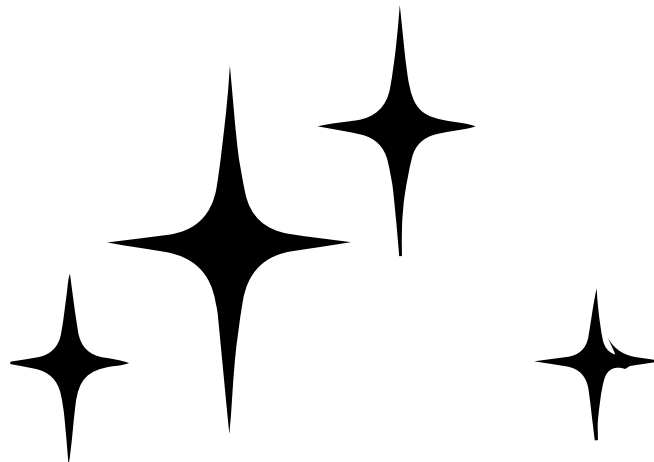
Blanca is an assistant professor of Sociology at UT Austin. Her research explores the broader consequences of the immigrant deportation regime, including the implications of local policies on immigration lawyering. Her multiple award-winning work has been published in *Social Problems* and *Journal of Ethnic and Migration Studies* and her research has been published in the *Journal of Interpersonal Violence* and *Violence Against Women*.

**Chen Liang, Editor**

Chen Liang is an assistant professor at National Taiwan University. Her research examines how racialized immigrants struggle to obtain political power and influence, and how they refashion race relations in the process. Her dissertation uses a combination of ethnographic fieldwork and in-depth interviews to study Asian Americans' political incorporation and participation in Houston, Texas. Her research has been published in *Social Problems*, *Qualitative Sociology*, and *Sociological Perspective*.

**Roxanne Corbeil, Editor**

Roxanne is a Ph.D. student in sociology at UCLA studying border externalization and its intersection with the international development and humanitarian industry. Her research integrates a range of quantitative and qualitative methods to examine U.S. intervention in El Salvador and the network of organizations providing services to forcibly returned migrants.



IM MENTORING & PROFESSIONALIZATION COMMITTEE



Sam Dinger

Sam is a Postdoctoral Fellow at the New School for Social Research in the Zolberg Institute on Migration and Mobility. He received his PhD at NYU in 2025. His research looks at how young Syrian men navigate life transitions in exile, asking how displacement shapes their gendered aspirations, experiences of agency, and ethical repertoires.



Michelle Dromgold-Sermen

Dr. Michelle S. Dromgold-Sermen is Assistant Professor of Sociology at George Mason University. Her areas of expertise include membership and belonging, legality and immigrant incorporation, U.S. immigration law and policy, refugee resettlement, and global migration management. Her research is interdisciplinary and adopts multiple and mixed methods.



Ángel A. Escamilla García

Ángel A. Escamilla García is an assistant professor of Sociology. His research primarily uses qualitative methods and focuses on the international migration of vulnerable groups like children, LGBTQ+ individuals, and indigenous migrants. He is especially interested in understanding how violence shapes these groups' migration journeys.



Angela S. García

Angela S. García is Associate Professor at the University of Chicago's Crown Family School of Social Work, Policy, and Practice. She is a sociologist of immigration, membership, law, and the state, with a focus on undocumented migration in the context of US immigration federalism.



Rama Hagos

Rama Hagos is a Provost's Postdoctoral Fellow at the University of Pennsylvania. Her research draws on historical and contemporary data to understand differential patterns of integration across a range of health, economic, and social outcomes. She received her Ph.D. in Sociology with a concentration in Demography from Princeton University.

IM DIVERSITY, EQUITY & INCLUSION SUB-COMMITTEE



Carlo Handy Charles

Carlo Handy Charles is an Assistant Professor of Sociology at the University of Windsor, a Visiting Scholar at the University of Michigan's Sociology Department, and a Fellow at the Institut Convergences Migrations, CNRS-Paris. His current book project examines the impacts of queer transnational relationships among Haitian migrants and nonmigrants across eight countries. His research has been supported by the Canadian Sociological Association, the Pierre Elliott Trudeau Foundation, France's National Center for Scientific Research Foundation, Canada's Social Sciences and Humanities Research Council, and the Canadian Federation for the Humanities and Social Sciences.



Jesse Yeh

Jesse Yeh is assistant professor of instruction of legal studies at Northwestern University. Their research examines how political actors mobilize group threat. Their work on how Democrats and Republicans construct racism, migrant threat, and migrant belonging is published in Law & Society Review and American Journal of Cultural Sociology.



Vanessa Delgado

Vanessa Delgado is an Assistant Professor of Sociology at Washington State University. She employs qualitative methods to examine how U.S. immigration laws shape the integration pathways of Latino/a immigrants and their children. Her research is featured in various sociology journals and public outlets.



Elizabeth Jacobs

Liz Jacobs is an Assistant Professor in the Department of Sociology at the University of Connecticut. Her research agenda asks how institutions – state, corporate, and academic – shape the economic, social and spatial mobility of immigrants and refugees. Using in-depth interviews and computational techniques, she constructs and analyzes novel data sources to study the institutional reproduction of inequality in global contexts. Her scholarly interests encompass the areas of migration, race, gender, education and work.



Swan Ye Htut

Swan Ye Htut (he/him) is a PhD candidate in Sociology at Stanford University. His research interests are broadly focused on immigrants' ethnic and racial identification, and refugee accommodation in the US and India. Currently, he is working with refugee communities at the India-Myanmar border to understand how they navigate displacement.

IM MINI-CONFERENCE SUBCOMMITTEE



Bernadette Ludwig

Bernadette Ludwig, PhD is a Sociologist and the Assistant Dean of the Macricostas School of Arts and Sciences at Western Connecticut State University. Her research focuses on the intersection of immigration and race; specifically, how racism affects Black refugees' ability to find refuge detailed in *Unwelcome Shores. Black Refugees in America* (Dec. 2025, Rutgers University Press.)



Ken Chih-Yan Sun

Ken Chih-Yan Sun is Associate Professor of Sociology and Criminology at Villanova University. He is the author of *Time and Migration: How Long-term Taiwanese Migrants Negotiate Later Life* (Cornell University Press, 2021) and the coauthor of *Transnational Social Protection: Social Welfare Across National Borders* (Oxford University Press, 2023; with Peggy Levitt, Erica Dobbs, and Ruxandra Paul).



Neha Lund

Neha Lund is a PhD candidate in sociology at Brown University. Their research interests center around racial formation, immigration law/politics, and social movements. Their dissertation examines these themes through a case study of the creation & expansion of TPS as a new legal category, while previous work has looked at the racial politics of status adjustment for Afghan immigrants.



Chien-Juh Gu

Chien-Juh Gu is Professor of Sociology at Western Michigan University. She is the author of *The Resilient Self: Gender, Immigration, and Taiwanese Americans* and is currently working on her third book. Gu was a Fulbright Scholar and a finalist for the Rosabeth Moss Kanter Award for Excellence in Work-Family Research.



Melissa Hurtado Nuez

Melissa Hurtado Nuez is a Cuban-born Sociology Ph.D. student researching migration and guns in society.

Congratulations to our winners!



2025 ASA INTERNATIONAL MIGRATION SECTION

Award Winners

ARISTIDE ZOLBERG DISTINGUISHED STUDENT SCHOLAR AWARD

**Adriana P. Ramírez (Ph.D. Candidate,
UC Berkeley)**

“Double Citizenship as a Double-Edged
Sword: Young Return Migrants’ Code-
Switching for Belonging in Mexico”
(Social Problems)

**Honorable Mention: Chen Liang
(Ph.D. Candidate, UT Austin)**

“Asian Americans’ Racialized
Incorporation into the Political Field”
(Social Problems)

AWARD FOR PUBLIC SOCIOLOGY

Co-Winners:

Caitlin Patler. UC Berkeley.

Daniel Martinez. University of Arizona.

DISTINGUISHED CAREER AWARD

Peggy Levitt. Wellesley College.

LOUIS WIRTH ARTICLE AWARD

CO-WINNERS:

**Galli, Chiara (University of Chicago), &
Garip, Filiz (Princeton University).**

2024. Bringing children to the center of
migration theory. *International
Migration Review*, 58(4), 1876-1912.

**Moinester, Margot (Washington
University in St. Louis).** 2024. The

control boom: US interior immigration
enforcement, 1971-2010. *American
Journal of Sociology*, 129(5), 1447-1492.

THOMAS & ZNANIECKI BOOK AWARD

**Lisa Sun-Hee Park (UC Santa Babara),
Erin Hoekstra (Independent Scholar),
and Anthony M. Jimenez (Rochester
Institute of Technology).** The Third Net:
The Hidden System of Migrant Health
Care,

HONORABLE MENTIONS:

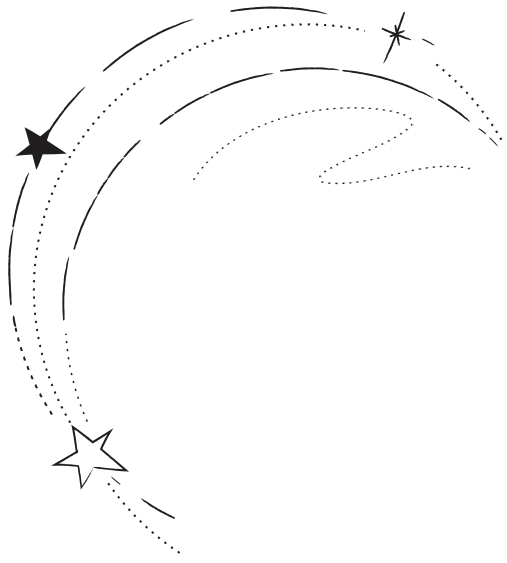
Chiara Galli (University of Chicago)

*Precarious Protections: Unaccompanied
Minors Seeking Asylum in the United
States.*

**Maryann Bylander (Lewis and Clark
College)** The Trade-Offs of Legal Status:

Safe Migration, Documentation, and Debt
in Southeast Asia.

A SPECIAL THANK YOU TO THOSE WHO SERVED ON AWARD COMMITTEES IN 2024-2025!



**THANK YOU
FOR A
SUCCESSFUL
2025 ASA!**



Call for Awards

ARISTIDE ZOLBERG DISTINGUISHED STUDENT SCHOLAR AWARD

Students from any discipline may nominate papers about any topic related to international migration broadly conceived. Any section member may nominate a paper for consideration and self-nominations are encouraged. Papers may be single or co-authored, but all author(s) must be graduate student(s) (i.e., not have a Ph.D. in hand) at the time of nomination for the award. Both published and unpublished papers are eligible. Papers must be no more than 12,000 words, including the abstract and references. Winner(s) must be members of the International Migration Section at the time of the awards ceremony. An abstract and copy of the paper should be sent via email to all committee members by March 15, 2026, with word count clearly noted.

Committee:

Stephanie L. Canizales (Chair), *University of California at Berkeley*, scanizales@berkeley.edu

Tate Kihara, *Keio University*,
tkihara@keio.jp

Chen Liang, *National Taiwan University*,
chenliang@ntu.edu.tw

Jane Lilly López, *Brigham Young University*,
lopez_jane@byu.edu

THOMAS & ZNANIECKI BOOK AWARD

This award is given annually for outstanding social science scholarship in the field of international migration to a book published within the previous 2 years. For the 2026 award, books must bear the publishing or copyright date of 2024 or 2025. Any section member may nominate a book for consideration and self-nominations are encouraged. An author can nominate more than one book (solo-authored or co-authored, but not edited) in any given award cycle, though any book awarded “honorable mention” in a previous year is ineligible for the award in subsequent years. Books published in print will be considered the first year they are either published in print or have a formal copyright date in print, and can be re-nominated and considered again one year after. E-Books published only online will be considered the first year they are either published online or have a formal copyright date online, and can be re-nominated and considered again one year after. Author(s) should note the publication or copyright information, plus the first year the book was ever considered for this award, upon nomination.

Winner(s) must be members of the International Migration Section at the time of the awards ceremony. Arrangements must be made with the publisher to send the book to all committee members by March 15, 2026. Please contact the committee Co-chairs for mailing addresses.

Committee:

Lisa Sun-Hee Park (Co-chair), *University of California at Santa Barbara*, lsp@ucsb.edu

Maryann Bylander (Co-chair), *Lewis & Clark College*,
bylander@lclark.edu

Chiara Galli, *University of Chicago*,
cgalli@uchicago.edu

Luis Edward Tenorio, *Colby College*,
ltenorio@colby.edu

For more details, please visit:
<https://www.asanet.org/communities-and-sections/sections/section-award-nomination-calls/#im>



Call for Awards

AWARD FOR PUBLIC SOCIOLOGY

This award recognizes the work of an IM section member who addresses immigration and related issues in ways that apply scholarly knowledge directly in public work, generates such knowledge for public use, or otherwise contributes to improving the lives of migrants or refugees. This prize recognizes the value of such applied work and seeks to promote public sociology. "Public work" is broadly understood, but can include policy making, work with community organizations, advocates, a government agency, or a university, or engagement in public debate. Winner(s) must be members of the International Migration Section at the time of the awards ceremony. Members may be nominated by a scholar or community member familiar with their work. Nominations must outline the scholar's contribution to public sociology and can include supporting documents or other letters or support. Packets should be submitted to all members of the award committee by March 15, 2026.

Committee:

Daniel E. Martinez (Chair), *University of Arizona*,
mada0102@arizona.edu

Caitlin Patler, *University of California at Berkeley*,
patler@berkeley.edu

Andrew Le, *Arizona State University*,
AndrewnLe@asu.edu

For more details, please visit:

<https://www.asanet.org/communities-and-sections/sections/section-award-nomination-calls/#im>

LOUIS WIRTH ARTICLE AWARD

The award is given annually to the outstanding article written by member(s) of the International Migration section published during the preceding two years (2024 or 2025). Any section member may nominate an article for consideration and self-nominations are encouraged. An author can nominate more than one article (solo authored or coauthored) in any given award cycle, though any article awarded "honorable mention" in a previous year is ineligible for the award in subsequent years. All articles will be considered the first year they are published either in print, online, or online before print, and can be re-nominated and considered again one year after.

Winner(s) must be members of the International Migration Section at the time of the awards ceremony. An abstract and electronic version of the article should be sent to the committee chair by March 15, 2026, alongside publication or copyright information, plus the first year the article was ever considered for this award.

Committee:

Filiz Garip (Co-chair), *Princeton University*,
fgarip@princeton.edu

Maria Abascal (Co-chair), *New York University*,
m.abascal@nyu.edu

Jiaqi Liu, *Singapore Management University*,
jiaqiliu@smu.edu.sg

Margot Moinester, *Washington University in St. Louis*,
mmoinester@wustl.edu

Janina L. Selzer, *Hamilton College*,
jselzer@hamilton.edu



Call for Awards

DISTINGUISHED CAREER AWARD

The award recognizes exceptional achievement and a lifetime of scholarly contribution to the field of the sociology of international migration. The letter of nomination should come from one or more IM section members and include a statement. The nomination should include a copy of the scholar's curriculum vitae, and an assurance that the nominee has given their permission for the nomination of the award. To be eligible for the Distinguished Career Award, scholars must be members of the American Sociological Association and the International Migration section at the time the award is received (though not required at the time of nomination). Members of the award committee (i.e., the past-Chair, Chair, and Chair-elect) are not eligible to be nominated while in office. All nominated candidates will remain active for two rounds of the award. Nominations will be evaluated by the Distinguished Career Award committee. Please send nomination letters along with supporting material via email to all members of the committee by March 15, 2026.

Committee:

Jean Beaman (IM Chair), *CUNY Graduate Center*,
JEAN.BEAMAN84@gc.cuny.edu

Elizabeth Aranda (IM Chair-elect), *University of South Florida*,
earanda@usf.edu

Zai Liang (IM Past Chair), *State University of New York at Albany*,
zliang@albany.edu

For more details, please visit: <https://www.asanet.org/communities-and-sections/sections/section-award-nomination-calls/#im>



MEMBER NEWS

Adem, Muna – Started a new position at the University of Notre Dame (Fall 2025).

Campos Ugaz, Daniela – Appointed Assistant Director and Director of Graduate Studies of the Master's in Development Practice at Emory University.

Jasso, Guillermina – Won the 2025 ISJR Lifetime Achievement Award from the International Society for Justice Research (ISJR) for distinguished contributions to the scientific study of justice. Delivered the Award Lecture titled “From Foundations of Justice Analysis to Current and Future Challenges” at the ISJR biennial conference in Seattle, Washington.

León-Pérez, Gabriela – Received the community award "Persona de Poder" from Virginia Commonwealth University for contributions to Virginia’s immigrant and Latino/Hispanic communities.

Li Rosenberg, Qiaoyan – Her dissertation, Labor Migration Programs in Japan: A Three-Step Pathway to Permanent Residence, but Precarious Labor for All, received the inaugural "United States–Japan Foundation Scholar" Dissertation Award.

Liu, Han – Received the E. Walter Terrie Award from the Southern Demographic Association.

Liu, Qing Tingting – Recently started as the Research Coordinator for the AAAS Social Sciences Caucus. [Link](#)

Lund, Neha – Won the Russell Sage Dissertation Grant for her project on Temporary Protected Status. [Link](#)

Mufti, Nadimul Quamar Ahmed – A PhD candidate in environmental sociology, received the "Achievement of the Year Award" 2025 at Utah State University, the highest student recognition at USU.

Sowad, Abu Saleh Mohammad – Completed his PhD in Social and Cultural Analysis at Concordia University. His dissertation, Making Men in Transnational Spaces, was supervised by Dr. Marc Lafrance. He will begin a postdoctoral fellowship in 2026 with Dr. Nancy Clark at the University of Victoria as part of the MENBELONG project and will join the Institute on Aging and Lifelong Health (IALH) as an Affiliate Researcher.



ANNOUNCEMENTS

2026 SocSci Caucus Outstanding Research Article Awards Competition: The AAAS SocSci Caucus is pleased to announce a call for nominations for three article awards: Outstanding Graduate Student Research Article, Outstanding Emerging Scholar Research Article, and Outstanding Tenured Faculty Research Article. Papers submitted for any award category require a nomination letter (either external or self-nomination) and the author/s (including all writers, if multiply authored) of the submitted papers must be current dues-paying members of the Social Science Caucus. External nominators are not required to be members of the Caucus. More information can be found here:

<https://sites.google.com/view/aaas-socsci/article-awards?authuser=0>



NEW PUBLICATIONS

Adem, M., & McManus, P. A. (2025). Political (dis)interest during the transition to adulthood among immigrant adolescents in four Western countries. *Ethnic and Racial Studies*, 1–23.

Adem, M., & Okamoto, D. G. (2025). The Social Psychology of Immigration: A Multidimensional Approach. *Handbook of Social Psychology: Vol. 2: Meso and Macro Perspectives*, 183–208.

Agius Vallejo, Jody, and Sean Angst. (2025). “Orange County’s Future Depends on Supporting Immigrants Today.” *Orange County Register*, October 22, 2025.

Agius Vallejo, Jody and Manuel Pastor. (2025). Californians Must Refuse to Abandon the Immigrants Among Us. *Los Angeles Times*, May 6, 2025.

Ahmed, M. N. Q., Ulrich-Schad, J., Givens, J. E., Vinyeta, K., & Ryder, S. (2025). “The Role of Environmental & Climate Issues in Utahns' Migration Decisions Along the Rural-Urban Continuum.”

Ahmed, M.N.Q., Givens, J. E., and Arodondo, A. (2024). The links between climate change and Migration: A review of South Asian Experiences. *SN Social Sciences*, 4(3), 64.
<https://doi.org/10.1007/s43545-024-00864-2>.

Canedo, A. (2025). A tale of two homecomings: the fragmented reintegration of first- and 1.5-generation returnees in Mexico. *CMS*, 13, 54. <https://doi.org/10.1186/s40878-025-00477-5>.

Cheong, Amanda R., et al. (2025). “Unpacking ‘Birth Tourism’: Incidental Citizenship and the Diverse Migration and Reproduction Trajectories of Nonresident Mothers in Canada.” *Journal of Ethnic and Migration Studies*, 51(17): 4299–4319.
<https://doi.org/10.1080/1369183X.2025.2534416>.

Corbeil, Roxanne. (2025). “Foreign Aid Allocation as Migration Control: Root Causes or Migration Management?” *International Migration Review*.
<https://doi.org/10.1177/01979183251381275>.

Dromgold-Sermen, Michelle S. (2025). “A Stratified Premium: The Hierarchy of Waiting for Employment-Based Lawful Permanent Residence.” *Journal on Migration and Human Security*.
<https://doi.org/10.1177/23315024251380205>.

Fuentes-Mayorga, N., & García-Carmona, M. (2025). Leadership in Times of Crises: ICT as Praxis for Inclusive Education. In *Education, Immigration and Migration, 2nd Ed.*, pp. 89–105.

Galli, Chiara and Tatiana Padilla. (2025). “Deporting children: case outcomes for unaccompanied minors facing removal proceedings in US Immigration Court.” *Social Forces*.
<https://doi.org/10.1093/sf/soaf124>.

NEW PUBLICATIONS

- Galli, Chiara and Tatiana Padilla. (2025). "New Statistics on the Unaccompanied Minors in US Immigration Court." *International Migration Review*.
<https://doi.org/10.1177/01979183251316528>.
- Gubernskaya, Zoya and Dalton Conley. (2025). Does Genetic Predisposition Explain the "Immigrant Health Paradox"? *Populations*, 1(1), 4.
<https://doi.org/10.3390/populations1010004>.
- Gubernskaya, Zoya and Jungmin Shin. (2025). "Does Immigrant Health Advantage at Older Ages Endure beyond the First Generation." *The Journals of Gerontology, Series B*.
<https://doi.org/10.1093/geronb/gbaf117>.
- Guo, Weirong, and Qing Tingting Liu. (2025). "Privilege or Marginalization: How Chinese Youth from Divergent Class Backgrounds Make Sense of Racism in the U.S. and Australia." *Ethnic and Racial Studies*, 1–19. <https://doi.org/10.1080/01419870.2025.2519807>.
- Jasso, Guillermina. (2025). "Advancing Knowledge in the Spirit of Fararo: Generativity and Unification." *Journal of Mathematical Sociology*, 49(4): 211–246.
<https://doi.org/10.1080/0022250X.2024.2423944>.
- Jasso, Guillermina. (2025). "Certainty, Unity, and Tolerance." *Theory and Society*, 54(1): 29–33. <https://doi.org/10.1007/s11186-025-09594-7>.
- Jensen, Katherine and Jake Watson. (2025). "Transnationalizing Reception: Racial Scripts, Institutional Logics, and Congolese Refugee Processing." *Sociology of Race and Ethnicity*, 11(4): 556–570.
- Kim, Minjeong. (2025). "Cross-Border Anxiety among Korean Border Commuters." *Journal of Borderlands Studies*. <https://doi.org/10.1080/08865655.2025.2475808>.
- Kim, Minjeong and Ilju Kim. (2025). "The Second Generation's Perceptions of South Korea's Public Support Programs." *Ethnic and Racial Studies*, 48(6): 1218–1236.
- Lan, Pei-Chia and Minjeong Kim. (2025). Special Issue on "The Emerging Second Generation in Asia." *Ethnic and Racial Studies*, 48(6): 1185–1199.
- Li Rosenberg, Qiaoyan. (2025). Liberal Reform of Guest Worker Programs. *International Migration Review*. <https://doi.org/10.1177/01979183251363544>.
- Liu, Qing Tingting. (2025). "Disenchantment, Disembedding, and Reembedding." *Mobilities*, 1–18. <https://doi.org/10.1080/17450101.2025.2532407>.



NEW PUBLICATIONS

Liu, Qing Tingting. (2025). "Precarity or Empowerment." *Journal of Ethnic and Migration Studies*, 1–20. <https://doi.org/10.1080/1369183X.2025.2571404>.

Longo, Gina Marie, and Ian Almond. (2025). "Caught Between Rights and Vows." *Social Sciences*, 14(7): 442. <https://doi.org/10.3390/socsci14070442>.

Lund, Neha. (2025). "Making the Case for Afghan Adjustment." *Sociology of Race & Ethnicity*, 1–15.

Martínez, Caroline, Edward Telles, and Florencia Torche. (2025). "From Language to Self-Identification." *Social Forces*. Online first.

McConnell, Eileen Díaz and Connor M. Sheehan. (2025). "Deportation Entanglement and Latino Sleep Health." *Sleep Health*, 11(2): 133–139. <https://doi.org/10.1016/j.sleh.2025.01.004>.

McConnell, Eileen Díaz and Lisa M. Martinez. (2024). "Change in Administration, Change in Deportation Worry?" *International Migration Review*, 59(4): 2123–2154. <https://doi.org/10.1177/01979183241247010>.

McConnell, Eileen Díaz, Irene Vega and Rocío Rosales. (2025). "Strategic Coupling and Resilience." *Latino Studies*. <https://doi.org/10.1057/s41276-025-00543-0>.

Rodriguez, Cassandra. (2025). "The Affective Bargain." *Ethnic and Racial Studies*. <https://doi.org/10.1080/01419870.2025.2502602>.

Ryo, Emily, Jennifer M. Chacón, and Cecilia Menjívar. (2025). "Criminalization of Immigration." *RSF Journal of the Social Sciences*, 11(3): 282–343. <https://doi.org/10.7758/RSF.2025.11.3.07>.

You, Tianlong. (2025). "Refusable Citizenship: Stateless Myanmar Muslims and the Contingent Politics of Belonging in China's Southwestern Borderlands." *Citizenship Studies*, 0(0):1–19. <https://doi.org/10.1080/13621025.2025.2558414>.

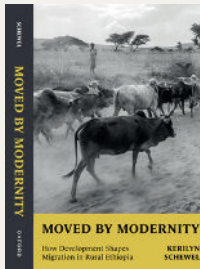
Zabala Ortiz, P. (2025). "Black like this, not like that." *Ethnic and Racial Studies*, 1–18. <https://doi.org/10.1080/01419870.2025.2570480>.

NEW BOOKS



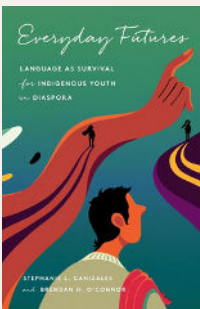
Illegality in the Heartland: Latinidad, Indigeneity, and Immigration Policies during Times of Hate

Andrea Gomez Cervantes
University of California Press



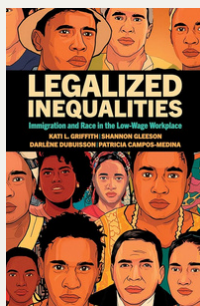
Moved by Modernity: How Development Shapes Migration in Rural Ethiopia

Kerilyn Schewel
Oxford University Press



Everyday Futures: Language as Survival for Indigenous Youth in Diaspora

Stephanie L. Canizales and Brendan H. O'Connor
Stanford University Press



Legalized Inequalities: Immigration and Race in the Low-Wage Workplace

Kati L. Griffith, Shannon Gleeson, Darlène Dubuisson,
and Patricia Campos-Medina
Russell Sage Foundation Press



Unwelcome Shores: Black Refugees in America

Bernadette Ludwig
Rutgers University Press