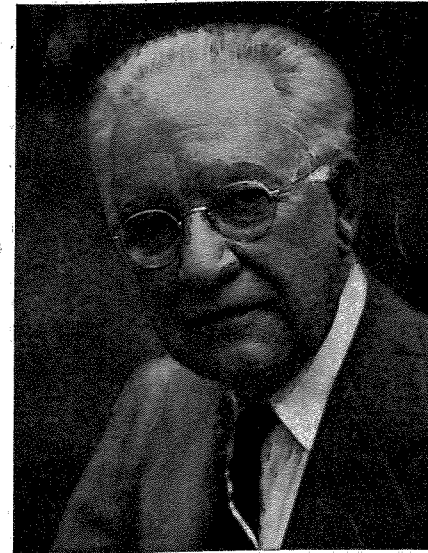


Program

American Sociological Society



ROBERT E. PARK
1864-1944

Forty-second Annual Meeting

Headquarters: HOTEL COMMODORE, NEW YORK

Saturday, Sunday, Monday, Tuesday

December 27, 28, 29 and 30, 1947

AMERICAN SOCIOLOGICAL SOCIETY

OFFICERS FOR THE YEAR 1947

President, LOUIS WIRTH, University of Chicago
First Vice-President, E. FRANKLIN FRAZIER, Howard University
Second Vice-President, ROBERT C. ANGELL, University of Michigan
Secretary-Treasurer, ERNEST R. MOWRER, Northwestern University

EXECUTIVE COMMITTEE

LOUIS WIRTH E. FRANKLIN FRAZIER ROBERT C. ANGELL

Former Presidents

GEORGE E. LUNDBERG, Univ. of Wash. RUPERT B. VANCE, Univ. of North Carolina
KIMBALL YOUNG, Northwestern Univ. CARL C. TAYLOR, U. S. Dept. of Agriculture

Elected at Large

ROBERT S. LYND, Columbia University FLORIAN ZNANIECKI, Univ. of Illinois
LOUIS WIRTH, University of Chicago KATHARINE JOCHER, Univ. of No. Car.
CHARLES S. JOHNSON, Fisk University SAMUEL A. STOFFER, Harvard Univ.

Elected from Affiliated Societies

RAYMOND V. BOWERS, Dist. of Columbia LLOYD ALLEN COOK, Ohio Valley
ROBERT K. MERTON, Eastern CALVIN F. SCHEIDT, Pacific
EDMUND DE S. BRUNNER, Rural HOWARD W. BEERS, Southern
NOEL P. GIST, Mid-West AUSTIN L. PORTERFIELD, Southwestern

SECTION CHAIRMEN 1947

Research Methods Raymond V. Bowers
Politics and International Relations W. Rex Crawford
Sociological Theory Talcott Parsons
Educational Sociology Leslie D. Zeleny
Social Disorganization and Social Problems Francis B. Merrill
Public Opinion and Mass Attitudes Clyde Hart
Social Psychology Herbert Goldhamer
Contributed Papers Katharine Jocher
Social Psychiatry H. Warren Dunham
Racial and Cultural Relations Leonard Bloom
The Family Leonard S. Cottrell
Industrial Relations Wilbert E. Moore
Ecology and Community A. B. Hollingshead
Population Philip M. Hauser

LOCAL ARRANGEMENTS COMMITTEE

W. C. WATERMAN, *Chairman* PAUL TAPPAN
CONRAD M. ARENSBERG ROSALIND TOUGH

GENERAL TOPIC OF MEETING:

"Present Status and Prospects of Research in the Fields of Sociology"

Saturday, December 27

2:00 P.M. Meeting of the Executive Committee, Room E

Sunday, December 28

9:00-10:00 A.M. Registration, Main Ball Room Foyer

10:00-12:00 M. RESEARCH METHODS (Joint Meeting with the American Statistical Association), Main Ball Room

Paper: RAYMOND V. BOWERS, Washington, D.C.

Discussion: TALCOTT PARSONS, Harvard University
PHILIP M. HAUSER, University of Chicago
GEORGE A. LUNDBERG, University of Washington

POLITICS AND INTERNATIONAL RELATIONS,
West Ball Room

Paper: W. REX CRAWFORD, University of Pennsylvania

Discussion: STUART BURGESS, Temple University
RAYMOND KENNEDY, Yale University
C. WRIGHT MILLS, Bureau of Applied Social Research

JOHN GARDNER, Carnegie Corporation
ROBERT WAELDER, Philadelphia
PAUL E. SMITH, U. S. Office of Education

CONTRIBUTED PAPERS, East Ball Room

Chairman: KATHARINE JOCHER, University of North Carolina

Papers: "Ecological Correlations and the Behavior of Individuals," W. S. ROBINSON, University of California

"The Relationship of Schizophrenia to Occupational Income and Occupational Prestige," ROBERT E. CLARK, Pennsylvania State College

"Levels of Health and Health Care of Michigan Families," CHARLES R. HOFFER and EDGAR A. SCHULER, Michigan State College

1:15-3:15 P.M. SOCIOLOGICAL THEORY, West Ball Room

Paper: TALCOTT PARSONS, Harvard University

Discussion: GEORGE A. LUNDBERG, University of Washington
ROBERT K. MERTON, Columbia University

THEODORE NEWCOMB, University of Michigan
FRANK FREMONT-SMITH, Josiah Macy Jr. Foundation

POPULATION (Joint Meeting with the American Statistical Association), Main Ball Room

Paper: PHILIP M. HAUSER, University of Chicago

Discussion: IRENE TAEUBER, Office of Population Research, Princeton University

FRANK NOTESTEIN, Princeton University

P. K. WHELPTON, Scripps Foundation, Miami University

HENRY S. SHRYOCK, JR., Bureau of the Census

3:30-5:30 P.M. INDUSTRIAL RELATIONS, East Ball Room

Paper: WILBERT E. MOORE, Princeton University

Discussion: DELBERT C. MILLER, University of Washington

PAUL MEADOWS, University of Nebraska

ALVIN W. GOULDNER, University of Buffalo

ROBERT DUBIN, University of Chicago

EDUCATIONAL SOCIOLOGY, West Ball Room

Paper: LESLIE D. ZELENY, Colorado State College of Education

Discussion: WILBUR B. BROOKOVER, Michigan State College

J. L. MORENO, Sociometric Institute

SOPHIE T. CAMBRIA, Hunter College

FREDERIC M. THRASHER, New York University

JOHN W. RILEY, JR., Rutgers University

OSCAR WESLEY, Drexel Institute

T. EARL SULLENGER, University of Omaha

Demonstration of a teaching unit on the United Nations, by Frederic M. Thrasher, New York University, and Olev Paus-Grunt, Information Staff, United Nations

Registration for visit to United Nations Headquarters

Monday, December 29

9:00-11:00 A.M. SOCIAL DISORGANIZATION AND SOCIAL PROBLEMS, East Ball Room

Paper: FRANCIS E. MERRILL, Dartmouth College

Discussion: EDWIN H. SUTHERLAND, Indiana University

STUART A. QUEEN, Washington University

ROBERT E. L. FARIS, Syracuse University

ERNEST R. MOWRER, Northwestern University

PUBLIC OPINION AND MASS ATTITUDES, Main Ball Room

Paper: CLYDE HART, National Opinion Research Center
Discussion: PAUL LAZARSFELD, Bureau of Applied Social Research

HERBERT BLUMER, University of Chicago

DANIEL KATZ, University of Michigan

JULIAN WOODWARD, Elmo Roper, Inc.

11:00-12:00 A.M. BUSINESS MEETING, Main Ball Room

1:15-3:15 P.M. SOCIAL PSYCHOLOGY (Joint Meeting with the American Statistical Association), Main Ball Room

Paper: HERBERT GOLDHAMER, University of Chicago

Discussion: RICHARD T. LAPIERE, Stanford University

ABRAM KARDINER, New York, N.Y.

C. WRIGHT MILLS, Bureau of Applied Social Research

JOSEPH K. FOLSOM, Vassar College

CONTRIBUTED PAPERS, West Ball Room

Chairman: ELLEN WINSTON, North Carolina State Board of Public Welfare

Papers: "Bureaucracy Reevaluated," LEONARD REISSMAN, University of Wisconsin

"Some Persistent Difficulties in Sociology," Constantine Panunzio, University of California

"Personality Adjustment of Rural and Urban Children," A. R. MANGUS, Ohio State University

3:30-5:30 P.M. SOCIAL PSYCHIATRY, East Ball Room

Paper: H. WARREN DUNHAM, Wayne University

Discussion: HARRY STACK SULLIVAN, Washington School of Psychiatry

BINGHAM DAI, Duke University

JOHN R. SEELEY, Toronto, Canada

L. GUY BROWN, Rhode Island State College

RACIAL AND CULTURAL RELATIONS, West Ball Room

Paper: LEONARD BLOOM, University of California, Los Angeles

Discussion: CHARLES S. JOHNSON, Fisk University

IRA DE A. REID, Atlanta University

EDGAR T. THOMPSON, Duke University

ARNOLD ROSE, Washington University

ROBIN M. WILLIAMS, Cornell University

ANDREW LIND, University of Hawaii

8:00-10:00 P.M. PRESIDENTIAL ADDRESSES (Joint Meeting with American Statistical Association), Main Ball Room

LOUIS WIRTH, *President*, American Sociological Society
WILLARD THORPE, *President*, American Statistical Association

Tuesday, December 30

9:00-11:00 A.M. THE FAMILY, East Ball Room

Paper: LEONARD S. COTTRELL, Cornell University
Discussion: ERNEST W. BURGESS, University of Chicago
RUTH S. CAVAN, Rockford College
MIRRA KOMAROVSKY, Barnard College

HOUSING, (Joint Meeting with the American Statistical Association), Main Ball Room

Chairman: HOWARD BRUNSMAN, Bureau of the Census
Papers: "An Appraisal Method for Measuring the Quality of Housing," ALLEN A. TWICHELL, American Public Health Association Committee on the Hygiene of Housing
"Problems in Development and Application of Standards of Housing in Making Minimum Adequate Budgets," LESTER S. KELLOGG and DOROTHY S. BRADY, Bureau of Labor Statistics
Discussion: NICHOLAS J. DEMERATH, University of North Carolina

11:00-12:00 A.M. BUSINESS MEETING, Main Ball Room

1:15-3:15 P.M. ECOLOGY AND COMMUNITY, East Ball Room

Paper: A. B. HOLLINGSHEAD, Yale University
Discussion: JAMES A. QUINN, University of Cincinnati
HAROLD F. KAUFMAN, University of Kentucky
GUY E. SWANSON, University of Chicago
WALTER FIREY, University of Texas
AMOS HAWLEY, University of Michigan
LEONARD LOGAN, University of Oklahoma

CONTRIBUTED PAPERS, South Room

Chairman: PAUL W. TAPPAN, New York University
Papers: "Distribution of Migrant Population in Chicago," Ronald Freedman, University of Michigan
"Another Commentary on So-Called Segregation Indices," JOSEPHINE J. WILLIAMS, University of Chicago
"Social Scientists' Opinion on the Psychological Ef-

fects of Enforced Segregation," Max Deutscher, Commission on Community Interrelations of the American Jewish Congress
"Collective Behavior in Race Relations," Clarence E. Glick, Tulane University

3:30-5:30 P.M. PLANS FOR THE 1950 CENSUS AND FOR THE IMPROVEMENT OF VITAL STATISTICS (Joint Meeting with the American Statistical Association), Main Ball Room

Chairman: EDMUND DE S. BRUNNER, Columbia University

Papers: "Sociologists' Suggestions in Relation to the 1950 Census," P. K. WHELPTON, Scripps Foundation, Miami University
"Comments on Feasibility of the Sociologists' Suggestions," A. Ross Eckler, Bureau of the Census
"Problems in the Revision of Birth and Death Certificates," Felix Moore, Office of Vital Statistics
P. K. WHELPTON, Scripps Foundation, Miami University
Discussion: T. LYNN SMITH, Vanderbilt University