

Sunday, March 3

10:00-11:30 A.M. **GENERAL SESSION Ballroom**
Chairman, J. E. Cutler, Western Reserve University
MARY VAN KLEECK, Russell Sage Foundation
"Towards an Industrial Sociology"
READ BAIN, Oxford University
"Mythopoeic Man"

11:30 A.M.-1 P.M. **Business Meeting of the Society Ballroom**

2:15- 4:15 P.M. **SOCIOMETRY Parlor C**
Chairman, Robert K. Merton, Columbia University
LOUIS GUTTMAN, Cornell University:
"Intensity and a Zero Point for Attitude Analysis"
Discussion: Raymond F. Sletto, University of
Minnesota
PAUL F. LAZARSFELD, Columbia University:
"On the Qualitative Rating of Social Status"
Discussion: Talcott Parsons, Harvard University

THE FAMILY Cypress Room
Marriage Selection and Adjustment
Chairman, Ray E. Baber, Pomona College
MILTON L. BARRON, Syracuse University:
"Intermarriage in a New England Industrial
Community"
JUDSON T. LANDIS, Michigan State College:
"Time Required to Achieve Marital Adjustment"
EARL LOMON KOOS, University of Rochester:
"Families in Trouble"
Discussion: M. F. Nimkoff, Bucknell University

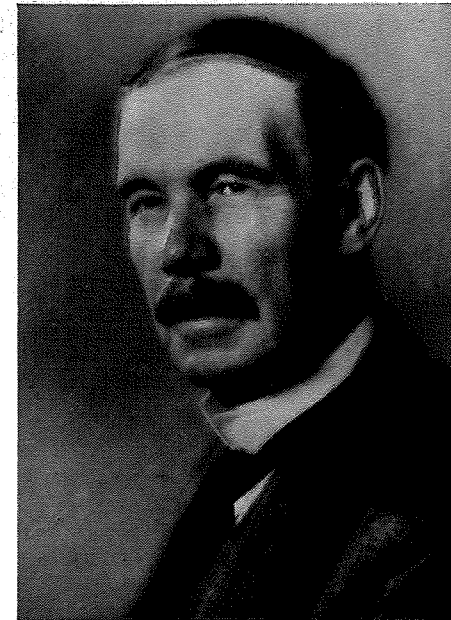
SOCIAL PSYCHOLOGY Ballroom
*Chairman, Clifford Kirkpatrick, University of
Minnesota*
ROBERT F. WINCH, University of Chicago:
"The Relationships Between Certain Social Background
and Parent-Child Factors in a Study of Courtship"
Discussion: Ray Sletto, University of Minnesota
JAMES W. WOODARD, Temple University:
"Some Implications From Our Present Knowledge
Concerning Group Prejudices"
Discussion: To be announced

4:15 P.M. **Meeting of the Executive Committee Parlor F**

CENSUS TRACT EXHIBIT: 1001 HURON ROAD

Program

American Sociological Society



E. A. ROSS

40th Annual Meeting

HOLLENDEN HOTEL, CLEVELAND, OHIO

March 1-3, 1946

Also meeting in Cleveland

RURAL SOCIOLOGICAL SOCIETY HOLLENDEN HOTEL
CATHOLIC SOCIOLOGICAL SOCIETY CLEVELAND HOTEL

AMERICAN SOCIOLOGICAL SOCIETY

OFFICERS FOR THE YEAR 1945

President, KIMBALL YOUNG, Queens College

First Vice-President, CARL C. TAYLOR, U. S. Dept. of Agriculture

Second Vice-President, LEONARD S. COTTRELL, Cornell University

Secretary-Treasurer, CONRAD TAEUBER, U. S. Dept. of Agriculture

EXECUTIVE COMMITTEE

KIMBALL YOUNG

CARL C. TAYLOR

LEONARD S. COTTRELL

Former Presidents

ROBERT M. MACIVER, Columbia Univ.

GEORGE A. LUNDBERG, Univ. of Washington

STUART A. QUEEN, Washington Univ.

RUPERT B. VANCE, Univ. of North Carolina

Elected at Large

THORSTEN SELLIN, Univ. of Penn.

LEONARD S. COTTRELL, Cornell Univ.

MALCOLM M. WILLEY, Univ. of Minn.

ROBERT S. LYND, Columbia University

DOROTHY S. THOMAS, Univ. of Calif.

LOUIS WIRTH, University of Chicago

Elected from Affiliated Societies

BRUCE L. MELVIN, Dist. of Columbia

CALVIN F. SCHMID, Pacific

E. FRANKLIN FRAZIER, Eastern

C. E. LIVELY, Rural

CLYDE F. HART, Mid-West

HOWARD W. BEERS, Southern

LLOYD ALLEN COOK, Ohio Valley

WILLIAM H. SEWELL, Southwestern

SECTION CHAIRMEN 1945

Community and Ecology Charles P. Loomis

Contributed Papers Katharine Jocher

Criminology Donald R. Taft

Educational Sociology Lloyd Allen Cook

Family Ray E. Baber

Political Sociology Sigmund Neumann

Population Irene B. Taeuber

Social Psychology Clifford Kirkpatrick

Social Research Raymond V. Bowers

Social Theory Talcott Parsons

Sociometry Robert K. Merton

Local arrangements made through Professor C. E. Gehlke.

Printed February 15, 1946. Any changes subsequent to this date will be announced at the Registration Desk

Friday, March 1

9:00-10:00 A.M. **Registration**

10:00-12:00 M. **SOCIAL RESEARCH Ballroom**

Chairman, Lt. Raymond V. Bowers, U.S.N.R.

W. N. HURWITZ, B. J. TEPPING, J. STEINBERG,
Bureau of the Census:

"Recent Census Developments in Population Sampling"

MARGARET JARMAN HAGOOD and LOUIS J. DUCOFF,
U. S. Dept. of Agriculture:

"Some Measurement Problems Arising from Sociological Aspects of Full Employment Policy"

HOWARD WHIPPLE GREEN, Cleveland Health Council.
"Census Tracts as a Tool for Sociological Research"

CRIMINOLOGY Cypress Room

Chairman, Donald R. Taft, University of Illinois

MARSHALL B. CLINARD, Vanderbilt University

"Criminological Theories of Violation of Wartime Regulations"

Discussion: Joseph D. Lohman, University of Chicago

NORMAN S. HAYNER, University of Washington

"Criminogenic Zones in Mexico City"

Discussion: E. H. Sutherland, Indiana University

ALFRED C. SCHNUR, Miami University

"A Study of Wisconsin Released Prisoners"

Discussion: Michael Hakeem, Illinois State Penitentiary

EDUCATIONAL SOCIOLOGY Parlor C

Chairman, Alfred McClung Lee, Wayne University

LLOYD ALLEN COOK, Wayne University:

"The College Study in Intergroup Relations"

Discussion:

In reference to social theory, Verne Wright, University of Pittsburgh

In reference to public schools, Allen Y. King, Director Social Studies, Cleveland Public Schools

In reference to teacher education, H. C. Brearley, Peabody College for Teachers

1:15- 3:15 P.M. POLITICAL SOCIOLOGY Parlor C
Chairman, Sigmund Neumann, Wesleyan University

ROBERT A. BRADY, University of California:
"Social and Economic Planning in a Political
Democracy"

C. WRIGHT MILLS, Columbia University:
"The Middle Classes in Middle-sized Cities:
Politics and Stratifications"

SEBASTIAN DE GRAZIA, University of Chicago:
"Status as a Political Motive"

SOCIAL PSYCHOLOGY Ballroom

Chairman, Clifford Kirkpatrick, University of Minnesota

THOMAS D. ELIOT, Northwestern University:
"Social Psychological Aspects of War Bereavements"

Discussion: Reuben L. Hill, Iowa State College

TALCOTT PARSONS, Harvard University:
"Aspects of Psychological Dynamics of American
Kinship System"

Discussion: Howard Becker, University of Wisconsin

COMMUNITY AND ECOLOGY Cypress Room

Chairman, Charles P. Loomis, Michigan State College

CARL C. TAYLOR, U. S. Dept. of Agriculture:
"The Application of Sociological Analysis to Planning
Settlement and Service Patterns on the Columbia
River Basin and Central Valley Reclamation
Projects"

Discussion: Marion Clawson, Bureau of Agricultural
Economics

Douglas Marshall, University of
Wisconsin

WALTER FIREY, Michigan State College:
"Ecological Considerations in Planning for Rurban
Interstices"

Discussion: Amos Hawley, University of Michigan

3:30- 5:30 P.M. SOCIAL THEORY Ballroom

The Social Responsibilities of Sociological Science
Chairman, Talcott Parsons, Harvard University

CARL C. TAYLOR, U. S. Dept. of Agriculture:
"The National Level"

LOUIS WIRTH, University of Chicago:
"The Local Community Level"

3:30-5:30 P.M. SOCIOMETRY Parlor C

Chairman, Robert K. Merton, Columbia University

DELBERT C. MILLER, Kent State University:
"The Social Factors of the Work Situation"

Discussion: Burleigh Gardner, University of Chicago

CHARLES P. LOOMIS, Michigan State College:
"The Spread and Persistence of German Nazism in
Rural Areas"

Discussion: Rudolf Heberle, Louisiana State
University

POPULATION Cypress Room

**Demographic Aspects of World War II: Tentative
Analyses: The United States**

Chairman, Philip M. Hauser, Bureau of the Census

P. K. WHELPTON, Scripps Foundation:
"Fertility"

HENRY S. SHRYOCK and HOPE T. ELDRIDGE, Bureau
of the Census:

"Migration"

A. J. JAFFE, Bureau of the Census, and SEYMOUR L.
WOLFBEIN, Bureau of Labor Statistics:

"Economic Impact"

4:30 P.M.

Meeting of the Executive Committee Parlor F

5:30 P.M.

**Committee on Conceptual Integration Room to be
announced**

7:00 P.M.

DINNER Ballroom

Joint Meeting with the Rural Sociological Society

*Chairman, Rupert B. Vance, University of North
Carolina*

Presidential Addresses:

Edmund deS. Brunner, Rural Sociological Society

Kimball Young, American Sociological Society

Saturday, March 2

8:00 A.M.

University of Chicago Breakfast

8:45-10:45 A.M.

POLITICAL SOCIOLOGY Parlor C

**Social and Political Reconstruction in the Post War
World**

Chairman: Sigmund Neumann, Wesleyan University

SINCLAIR W. ARMSTRONG, Brown University

"Allied Military Government in Germany: Problems
and Consequences"

LOUIS R. FRANCK, UNRRA

"Post-War France"

THE FAMILY Ballroom

The Family and The War

Chairman, Ray E. Baber, Pomona College

MILDRED FAIRCHILD, Bryn Mawr College:

"Compilation of Data Regarding American Women
at Work and at Home in World War II"

LEONARD BLOOM, University of California:

"Familial Adjustments of Japanese-Americans to
Relocation: Transitional Phase"

JOHN F. CUBER, Ohio State University:

"A Study of the Adjustmental Problems of Returning
Service Men and Their Spouses"

Discussion: Harriet R. Mowrer, Evanston, Illinois

SOCIAL RESEARCH Cypress Room

Chairman, Lt. Raymond V. Bowers, U.S.N.R.

BURLEIGH GARDNER and WILLIAM F. WHYTE, University of Chicago:

"Methods for the Study of Human Relations in Industry"

ELIOT D. CHAPPLE, The Chapple Co., Boston, Mass.:
"Some Applications of the Interaction Chronograph in Industry"

EVERETT C. HUGHES, University of Chicago:
"The Knitting of Racial and Ethnic Groups in Industrial Organizations"

- 11:00-12:00 M. **Business Meeting of the Society Ballroom**
- 12:00 M. **Nominating Committee Luncheon Room to be announced**
- 12:15 P.M. **Luncheon Meeting, Rural Sociological Society Parlor B**
Chairman, Edmund deS. Brunner, Teachers College, Columbia University
HARRY SCHWARTZ, State Department (formerly with OSS)
DAVID JENKINS, Pauley Commission, Japan
"Contributions of Rural Sociology to Programs in, and Understanding of, Other Nations"

- 1:15- 3:15 P.M. **EDUCATIONAL SOCIOLOGY Cypress Room**
Chairman, Lloyd Allen Cook, Wayne University
KURT LEWIN, Massachusetts Institute of Technology:
"A Basic College and Field Program in Group Dynamics"
Discussion:
In reference to social theory, Stuart A. Queen, Washington University
In reference to social action, Hugh Masters, W. K. Kellogg Foundation
In reference to college teaching, Stanley Dimond, Director, Citizenship Education Study, Detroit

POPULATION Ballroom

Demographic Aspects of World War II: Tentative Analyses: Europe

Chairman, Warren S. Thompson, Scripps Foundation

EUGENE M. KULISCHER, Washington, D. C.:
"Redistribution of Population after World War II"

ENID CHARLES, Dominion Bureau of Statistics, Canada:

"Great Britain"

DUDLEY KIRK, Princeton University:

"Germany"

CONTRIBUTED PAPERS Parlor C

Chairman, Katharine Jocher, University of North Carolina

MELVIN SEEMAN, Ohio State University
"Skin Color Values in Three All-Negro School Classes"

F. HOWARD FORSYTH, War Production Board
"Relevance and the Academic Bias"

C. WAYNE GORDON, Washington University
"Types of Union Leaders and Their Attitudes Toward the Integration of Negroes in Industry"

CHARLES HUNT PAGE, New York City
"Notes on a Bureaucratic Structure"

- 3:30- 5:30 P.M. **SOCIAL THEORY Ballroom**
Contributions of Recent Developments in Methods of Empirical Research to Sociological Theory
Chairman, Talcott Parsons, Harvard University
ROBERT K. MERTON, Columbia University
"Bearing of Empirical Research on the Development of Social Theory"

PAUL F. LAZARFELD, Columbia University
"Interpretation as a Research Operation: A Special Case"
Discussion: Everett C. Hughes, University of Chicago

COMMUNITY AND ECOLOGY Cypress Room

Chairman, Charles P. Loomis, Michigan State College

JOHN PROVINSE, War Relocation Authority, and
SOLON KIMBALL, Michigan State College:

"Building New Communities During War Time"

Discussion: Burleigh Gardner, University of Chicago

MIRRA KOMAROVSKY, Barnard College:

"Voluntary Associations of Urban Dwellers"

Discussion: William Whyte, University of Chicago

PAUL K. HATT, Ohio State College

"The Concept of Natural Area"

CRIMINOLOGY Parlor C

Chairman, Donald R. Taft, University of Illinois

ERNEST R. MOWRER, Northwestern University:

"The Concept of the War Criminal"

Discussion: George B. Vold, University of Minnesota

J. L. MORENO, Beacon Hill Sanitarium

"Psychodramatic Trial of War Criminals"

Discussion: Read Bain, Miami University;
Lloyd Allen Cook, Wayne University

- 4:30 P.M. **Meeting of the Executive Committee Parlor F**

- 8:00 P.M. **GENERAL SESSION Ballroom**

Chairman, Kimball Young, Queens College

S. A. STOFFER, Social Science Research Council
"Attitude Studies in the Army and Some of Their Implications as to Research Method"

JOHN W. RILEY, JR., Rutgers University
"Opinion Research in Liberated Europe"

PHILIP M. HAUSER, Bureau of the Census
"Are the Social Sciences Ready?"