

## OTHER CONVENTIONS

Other societies meeting in Chicago, with the names of their secretaries are: American Association for Labor Legislation, John B. Andrews, New York City.

American Association of University Teachers of Insurance, Chester A. Kline, University of Pennsylvania.

American Business Law Association, S. Homer Smith, Temple University.  
American Finance Association, Kenneth Field, Carnegie Institute of Technology.

American Marketing Association, Albert Haring, Indiana University.

American Statistical Association, R. L. Funkhouser, Washington, D. C.

Institute of Mathematical Statistics, Paul R. Rider, Washington University.

Rural Sociological Society, T. Lynn Smith, Louisiana State University.

Tax Policy League, Mabel L. Walker, New York City.

## NOTES

The picture of William Graham Sumner which appears on the cover of this program was obtained through the courtesy of the Department of Sociology of Yale University.

Dr. Alfred McClung Lee, Chairman of the Society's Committee on Public Relations, has available for *representatives of the press* copies of papers and other materials dealing with the convention's proceedings. The press room is 1158.

Rooms 1171-1177-1120-1124-1128 are reserved for exhibits.

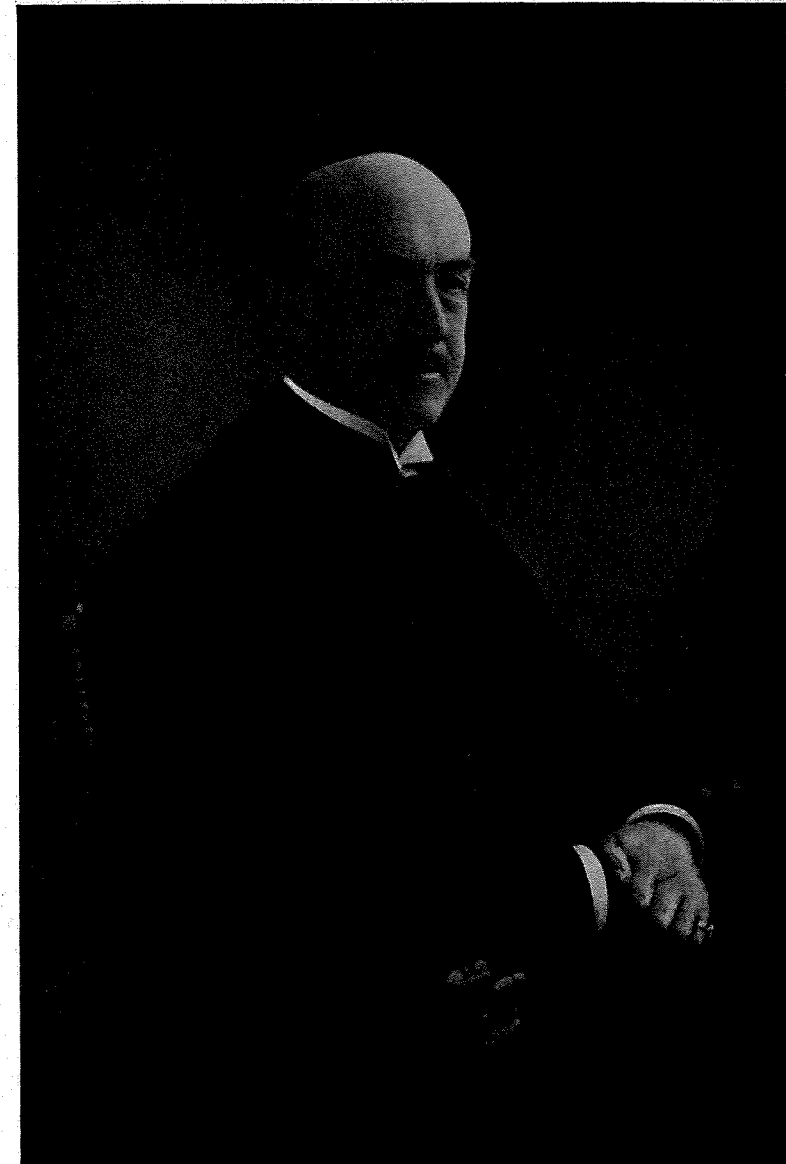
Members of the Society will note that an informal Smoker has been substituted for the annual dinner meeting. Members attending the smoker will be guests of the University of Chicago.

## MEMBERSHIP IN THE SOCIETY

Membership in the American Sociological Society is open to persons who have an interest in the objectives of sociological scholarship and research. There are six classes of membership. *Annual members* pay \$6.00 per year; *student members*, \$4.00 per year; *joint membership* of husband and wife, \$7.00 per year; *subscribing members*, \$10.00 per year; *sustaining members*, \$25.00 per year; and *life members* who make a single payment of one hundred dollars. All classes of members receive the *American Sociological Review*. Inquiries concerning membership may be directed to the secretary.

PROGRAM of the  
THIRTY-FIFTH ANNUAL MEETING  
OF THE

*American Sociological Society*



WILLIAM GRAHAM SUMNER  
(1840-1910)

*Headquarters:* THE CONGRESS HOTEL, CHICAGO,  
FRIDAY, SATURDAY, AND SUNDAY  
DECEMBER 27, 28, AND 29, 1940

## OFFICERS OF THE SOCIETY

### *President*

ROBERT M. MACIVER, Columbia University

### *First Vice-President*

STUART A. QUEEN, Washington University

### *Second Vice-President*

JAMES H. S. BOSSARD, University of Pennsylvania

### *Secretary-Treasurer*

HAROLD A. PHELPS, University of Pittsburgh

### *Former Presidents*

Edward A. Ross	Howard W. Odum
George E. Vincent	E. S. Bogardus
J. P. Lichtenberger	L. L. Bernard
Charles A. Ellwood	E. B. Reuter
Robert E. Park	E. W. Burgess
John L. Gillin	F. S. Chapin
William I. Thomas	H. P. Fairchild
John M. Gillette	Ellsworth Faris
William F. Ogburn	Frank H. Hankins

Edwin H. Sutherland

### *Elected Members of Executive Committee*

George A. Lundberg	Lowry Nelson
Donald R. Young	Joseph K. Folsom
Warner E. Gettys	Robert S. Lynd

### *Committee on Local Arrangements*

Louis Wirth, Chairman	Thomas D. Eliot
Herbert Blumer	Thomas A. Egan
A. P. Schorsch	

All meetings except the business sessions are open to the public and, unless otherwise indicated, are held at the Congress Hotel. Tickets for luncheons should be obtained as early as possible, and reservations for breakfast meetings should be made at the registration desk. Meetings designated by the asterisk are not under the direct auspices of the Society.

## PROGRAM OF THE THIRTY-FIFTH ANNUAL MEETING

FRIDAY, DECEMBER 27

- 8:30 A.M. **Registration** of members and guests of the Society and reservation of breakfast and luncheon tickets. Florentine Foyer.
- 9:00-10:00 A.M. **Business Meeting** for reports of committees and representatives of the Society. Florentine Room.
- 10:00-12:00 A.M. **Division on Social Research.** Raymond Bowers, University of Rochester, Chairman. Florentine Room. Topic: The "Inductive-Deductive" Method in Social Research: its theory and application. "The Inductive-Deductive Method in Social Research," Mark A. May, Yale University. "Sex Regulation and Social Structure," George P. Murdock, Yale University. "A Learning Theory of Imitative Behavior," John Dollard and Neal E. Miller, Yale University. Round Table discussion of these papers by W. F. Ogburn, C. Kirkpatrick, L. S. Cottrell, Jr., R. K. Merton.
- Division on Social Theory.** E. T. Hiller, University of Illinois, Chairman. Casino. Topic: The Search for Sociological Problems. Addresses by Florian Znaniecki, University of Illinois; George A. Lundberg, Bennington College. Open discussion for one hour. This meeting will be continued at one o'clock.
- \***Rural Sociological Society.** Topic: The Concept, *Social Process: Its Meaning and Usefulness in the Study of Rural Society.* Room 1164.
- 12:00 M. \*Luncheon Meeting of the Rural Sociological Society. Francis I Room. Luncheon Conference on Marriage Problems. Joint Meeting of the Sections on the Family and Sociology and Psychiatry. Room 1170. "The Psychodramatic Point of View," Bruno Solby, M.D., Psychodramatic Institute, Beacon, New York. "The Psychoanalytic Point of View," Franz Alexander, M.D., Institute for Psychoanalysis, Chicago, Illinois. "The Sociological Point of View," Leonard S. Cottrell, Jr., Cornell University. "The Point of View of the Family," J. G. Franz, Ohio State University.
- 1:00- 3:00 P.M. **Division on Social Theory.** (Continued) Casino

Topic: The Search for Sociological Problems.  
 "Sociology and the Other Sciences," Read Bain, Miami University. Howard Becker, University of Wisconsin.  
 Open discussion for one hour.

**Section on the Sociology of Religion.** Murray H. Leiffer, Garrett Biblical Institute, Chairman. English-Walnut Room.

"What Constitutes a Sociology of Religion?"

Papers will be read by Abraham Cronbach, Hebrew Union College, Franz Mueller, College of St. Thomas, Samuel C. Kincheloe, Chicago Theological Seminary. Summary by Robert E. Park, University of Chicago.

Discussion from the floor.

**Section on Political Sociology.** H. A. Miller, Temple University, Chairman. Pine Room Balcony.

Topic: Methods of Meeting Domination.

"The Chinese," J. Stewart Burgess, Temple University.

"The Jews," Werner Cahnman, Chicago, Illinois.

"The Czechoslovaks," Joseph S. Roucek, Hofstra College.

"The Spanish, the French and the English," Eric Estorick, New York University.

**Section on Community.** Robert A. Polson, Cornell University, Chairman. Room 1164.

"An Analysis of the Status System of a Modern Community," W. Lloyd Warner, University of Chicago. Discussion: Everett C. Hughes, University of Chicago; Willard Waller, Barnard College, Columbia University.

**Section on Educational Sociology.** Francis J. Brown, New York University, Chairman. Pine Room.

Topic: The Sociology of Childhood.

"Group Life of the Adolescent," Paul H. Furfey, Catholic University of America.

"Group Life of the Young Child," LaBerta A. Hattwick, Winnetka Nursery School Public Schools.

"The Child and the Social Structure," Kingsley Davis, Pennsylvania State College.

3:00- 5:00 P.M. **Section on Sociology and Psychiatry.** J. L. Moreno, Beacon, New York, Chairman. Pine Room Balcony.

"The Sociometric Foundation of Social Theory, with special emphasis on the concepts 'tele,' 'social atom,' and 'network'," Helen H. Jennings, Teachers College, Columbia University.

"Sociometric Measurement in Education," Leslie Day

Zeleny, State Teachers College, St. Cloud, Minnesota.

"A Sociometric Approach to Psychopathological and Socio-Pathological Phenomena," George A. Lundberg, Bennington College.

Discussion: Willard Waller; George Devereux.

**Section on Criminology.** Nathaniel Cantor, University of Buffalo, Chairman. Pine Room.

"Basic Crime Prevention," Saul D. Alinsky, Director, Industrial Areas Foundation.

To be followed by an hour of discussion.

**Section on Sociology and Social Work.** Walter W. Pettit, New York School of Social Work, Chairman. Room 1164.

Discussion to be opened by George S. C. Benson, Director, Curriculum in Public Administration, Institute of Public and Social Administration, University of Michigan.

"Federal Influence on Standards of Welfare Administration," Robert T. Lansdale.

"The Effect of the Expansion of Public Welfare Services on Education for Social Work," Marion Hathway, Secretary, American Association of Schools of Social Work.

**\*Committee on Conceptual Integration.** Albert Blumenthal, State Teachers College, Maryville, Missouri, Chairman. Room 1110.

"A Preliminary Definition of Definition," Maurice Parmelee, Washington, D. C.

"The Most Useful Definition of Definition," L. L. Bernard, Washington University.

Panel discussion on the definition of definition and its implications for the C. C. I.

Discussants: E. E. Eubank, Hornell Hart, and two others.

4:00 P.M. Meeting of the Nominating Committee. Room 1102.

5:00 P.M. Meeting of the Executive Committee. English-Walnut Room.

8:00 P.M. General Meeting, Joint Session for Presidential Addresses with the American Statistical Association. William F. Ogburn, University of Chicago, Chairman. Grand Ballroom, Stevens Hotel.

"An Inquiry into the Nature and Causes of Statisticians," F. Leslie Hayford, New York City, President of the American Statistical Association.

"Some Reflections on Sociology During a Crisis,"  
Robert N. MacIver, Columbia University, President  
of the American Sociological Society.

SATURDAY, DECEMBER 28

- 7:45 A.M. \*Annual Breakfast Meeting, Mid-West Sociological Society. South Grill.
- 8:00 A.M. \*Annual Breakfast Meeting, Ohio Valley Sociological Society. Room 1174.  
\*Annual Breakfast Meeting, Rural Sociological Society. Room 1170.  
\*Annual Breakfast Meeting, Alpha Kappa Delta, to be followed by a business meeting. English-Walnut Room.  
\*Breakfast Meeting, University of Minnesota. Room 1102.  
\*Breakfast Meeting, Harvard University. Room 1110.
- 9:00-10:00 A.M. Business Meeting of the Society. Florentine Room.
- 10:00-12:00 A.M. **Division on Population and Social Biology.** Norman E. Himes, Colgate University, Chairman. Florentine Room.  
"Similarities of Marriage Partners in Intelligence," Mapheus Smith, University of Kansas.  
"Differential Fertility Among Married Women Enumerated in the National Health Survey," Clyde V. Kiser, Milbank Memorial Fund, New York.  
"Present-Day Population Transfers," Imre Ferenczi, International Labor Office.  
"Research Possibilities in the 1940 Census," Philip M. Hauser, Assistant Chief Statistician for Population, Bureau of the Census, Washington.  
"Class Birth-Rates in England and Wales, 1921-31," John W. Innes, Columbia University.  
"Population Thought and Policy in England Since World War I," D. V. Glass, London School of Economics.  
**Division on Human Ecology.** Robert E. L. Faris, Bryn Mawr College, Chairman. Francis I Room.  
"The Development of Delinquent Traditions in the Urban Environment," Malcolm McCallum, Chicago Area Projects.  
"The Extension of Urban Characteristics into Surrounding Rural Areas," E. T. Hiller, University of Illinois.

- "The Relation of Institutions to Urban Population Characteristics, United States, 1935," Amos H. Hawley, University of Michigan.  
Discussion by Edgar A. Schuler, Louisiana State University; James H. S. Bossard, University of Pennsylvania, and open discussion.  
**Division on Social Psychology.** John Dollard, Yale University, Chairman. Gold Room.  
"Homicide and Race Conflict in the South," H. C. Brearley, Peabody College.  
"Differential Class Attitudes toward Corporate Property in Akron, Ohio," Alfred W. Jones, Institute for Applied Social Analysis, New York.  
"Personality Problems in Chinese Culture," Bingham Dai, Fisk University.  
**\*Rural Sociological Society.** General program with round-table discussion. Room 1164.  
Topic: Rural Planning: Its Social and Community Organization Aspects.  
**Division on Social Research.** Raymond Bowers, University of Rochester, Chairman. Pine Room.  
Topic: Methodological Problems in the Study of Social Disorganization.  
"Methodological Problems in the Study of Social Disorganization," E. R. Mowrer, Northwestern University.  
"The Effects Upon Tenant Families of Rehousing in a Public Housing Project," F. S. Chapin, University of Minnesota.  
Round-table discussion of these papers by R. C. Fuller, F. N. House, R. S. Sletto, and S. A. Stouffer.
- 1:00- 3:00 P.M. **Section on Educational Sociology—Joint Session with the Rural Sociological Society.**  
John H. Kolb, University of Wisconsin, Chairman. Florentine Room.  
Topic: Social Interaction of School and Community.  
"The Interaction of School and Community in a Democratic Society," Julian E. Butterworth, Cornell University.  
**Section on the Family.—Joint Session with the National Conference on Family Relations.** Meyer F. Nimkoff, Bucknell University, Chairman. English-Walnut Room.  
Topic: Prediction of Success or Failure in Marriage.  
"Some Data on Marital Adjustments of Intellectually Gifted Subjects," Lewis M. Terman and Winifred B. Johnson, Stanford University.

"Predicting Adjustment in Engagement and Marriage,"  
E. W. Burgess and Paul Wallin, University of Chicago.

Discussion: Hornell Hart, Duke University.

**Section on Sociology and Psychiatry.** J. L. Moreno, Beacon, New York, Chairman. Pine Room Balcony.

"The Leadership Process in Pre-Military Organizations," Albert J. Murphy, Office of Education, Headquarters Second Corps Area, U. S. Army.

"Informal Groupings in a Spanish-American Village," Charles P. Loomis, Acting Head, Division on Farm Population and Rural Welfare, U. S. Department of Agriculture.

"A New Theory of Treatment in Social Case Work," Mary B. Treudley, Wellesley College.

Discussion: C. C. Taylor; R. S. Lynd; R. M. MacIver.

3:00- 5:00 P.M. **Section on Political Sociology.** H. A. Miller, Temple University, Chairman. English-Walnut Room.

"The Problem of Democracy in the Increasing Governmental Control of Today," Charles J. Bushnell, University of Toledo.

"The Proletarian Movement," Johann Mokre, St. Louis University.

"Class Conflict in the United States," C. C. North, Ohio State University.

**Section on Sociology and Social Work—Joint Session with the American Association for Labor Legislation.**

John B. Andrews, Secretary American Association for Labor Legislation, Chairman. North Ballroom, Stevens Hotel.

"Multiple Pensions or Extended Coverage?" John J. Corson, Federal Bureau of Old-Age and Survivors' Insurance.

"Old Age Pension Overhang," Edwin E. Witte, University of Wisconsin.

Discussants: Helen Fisher Hohman, Northwestern University; Lea D. Taylor, Chicago Commons, Chairman Social Action Section of National Conference to Social Work; Paul Haensel, Northwestern University.

**\*Committee on Conceptual Integration.** Albert Blumenthal, State Teachers College, Maryville, Missouri, Chairman. Pine Room.

"Is Ambiguity Desirable in Certain Social Science Concepts?" George A. Lungberg, Bennington College.

"Comments on Professor Lundberg's Paper," Herbert Blumer, University of Chicago.

Panel discussion: Cooperative Research in Conceptual Integration: A Discussion of the Research Procedure, Program and Organization of the C. C. I.

Discussants: F. S. Chapin, G. A. Lundberg, L. L. Bernard and R. Bain.

**Section on the Sociology of Religion—Joint Session with the Rural Sociological Society.** David E. Lindstrom, University of Illinois, Chairman. Francis I Room.

Topic: Significant Church Programs for Rural Communities.

Papers will be read by L. G. Ligutti, Executive Secretary, National Catholic Rural Life Conference; Mark Rich, Secretary, Department of Town and Country Work, American Baptist Home Mission Society.

Discussion from the floor.

**Section on Criminology.** Nathaniel Cantor, University of Buffalo, Chairman. Pine Room Balcony.

"The Limits of Penal Treatment," Hans Von Hentig, Director, Colorado Crime Survey.

To be followed by an hour of discussion.

**Section on Social Statistics—Joint Session with the American Statistical Association.** Clark Tibbitts, University of Michigan, Chairman. Florentine Room.

"New Features of the 1940 Population Census," Leon E. Truesdell, Chief Statistician for Population.

"General Population Statistics," Henry S. Shryock, Statistician, Population.

"Employment and Income Statistics," A. Ross Eckler, Chief, Economic Statistics.

"Occupation and Industry Statistics," Alba M. Edwards, Chief, Occupation and Industry Statistics.

"Housing Statistics," Howard G. Brunsman, Chief, Housing Statistics

"The Use of Sampling in the Census," Philip M. Hauser, Assistant Chief Statistician for Population.

Discussion.

5:00 P.M. Meeting of the Executive Committee. Room 1102.

8:00 P.M. Smoker under the auspices of the University of Chicago. Hutchinson Commons, University of Chicago Campus.

SUNDAY, DECEMBER 29

8:00 A.M. \*Annual Breakfast Meeting, Rural Sociological Society. English-Walnut Room.

\*Breakfast Meeting, Social Science Section of the Illi-

- nois State Academy of Science. Rooms 1174 and 1176.  
 \*University of Chicago Breakfast. Francis I Room.  
 9:00-12:30 General Meeting of the Society to be followed by the Annual Business Meeting of the Society and the Election of Officers. Florentine Room.  
 Topic: The Challenge of the Times to the Sociologist.  
 "The Nature of the Challenge," Pitirim Sorokin, Harvard University.  
 "Sociologists and the Supreme Values of our Times," Howard Becker, University of Wisconsin.  
 Discussants: Willard Waller; Paul H. Landis.  
 Annual Business Meeting and Election of Officers.
- 10:00-12:00 A.M. \*Rural Sociological Society. General Meeting with round-table discussion. Room 1164.  
 Topic: Public Welfare and Family Social Work in Rural Areas.
- 12:45 P.M. \*Luncheon Meeting of the Rural Sociological Society. Pine Room Balcony.
- 2:00 P.M. Meeting of the New Executive Committee and of Newly Elected Chairmen of Sections. Room 1102.
- 2:00- 4:00 P.M. **Section on Community.** C. Horace Hamilton, North Carolina State College of Agriculture and Engineering, Chairman, English-Walnut Room.  
 "Status Systems and the Socialization of the Child," Allison Davis, Dillard University.  
 Discussion: Robin Williams, University of Kentucky.  
 "Cultural Factors in Land Use Planning," John H. Provinse, U. S. Department of Agriculture.  
 Discussion: George W. Hill, University of Wisconsin.  
**Section on the Family.** Meyer F. Nimkoff, Bucknell University, Chairman. Francis I. Room.  
 Topic: The Family and War.  
 "Selected Effects of War Upon the Family," James H. S. Bossard, University of Pennsylvania.  
 "Familism and War," Carle C. Zimmerman, Harvard University.  
 Discussion: Bernhard J. Stern, Columbia University; Eric Estorick, New York University; Clifford Kirkpatrick, University of Minnesota.  
**Section on Social Statistics.** Clark Tibbitts, University of Michigan, Chairman. Pine Room.  
 "The Implications and the Promise of Prediction in Sociology," Walter C. Reckless, Ohio State University.

- "Recent Major Efforts at Prediction: A Review and Evaluation," Elio D. Monachesi, University of Minnesota.  
 "What is Needed in Federal Criminal Statistics to Make Them Useful in the Calculation of Risks," C. C. Van Vechten, U. S. Bureau of the Census.  
 "The Possibility of Prediction from Knowledge of Constitutional Types," William H. Sheldon, Harvard University.  
 Discussion from the floor.  
**Section on Sociological Theory and Social Problems.**  
 Richard C. Fuller, University of Michigan, Chairman. Room 1164.  
 "Two Sociological Frames of Reference Contrasted," Stuart A. Queen, Washington University.  
 "The Natural History of a Social Problem," Richard R. Myers, University of Michigan.  
 Round-table discussion: James H. S. Bossard, University of Pennsylvania; Cecil North, Ohio State University; Mabel Elliott, University of Kansas; Verne Wright, University of Pittsburgh; Henry Meyer, Washington State College.

#### HEADQUARTERS

The headquarters of the Society will be the Congress Hotel where a registration and information desk will be maintained. Members are requested to register as soon as possible after arrival.

Reservation should be made at an early date. The rates at the Congress Hotel are: Single room, \$3.00 and up; double room, \$5.00 and up; suites \$8.00 and up.

The rates at the Stevens Hotel are: Single room, \$3.00 and up; double room, \$4.50 and up (with twin beds, \$6.00 and up).

Other hotels located near the Congress and Stevens Hotels are: Atlantic (Clark and Jackson); Bismarck (Randolph and Wells); Blackstone (Michigan Avenue at 7th); Great Northern (Jackson and Dearborn); Harrison (Harrison and Wabash); LaSalle (Madison and LaSalle); Morrison (Madison and Clark); Palmer House (15 East Monroe); Sherman (Clark and Randolph).

#### TRANSPORTATION

No convention rate has been allowed by the various passenger associations. However, it is suggested that members consult their local ticket office about possible round trip or Christmas rates.