



Orientation for New Section Officers

Monday, August 22, 2011

8:30 – 10:10 am



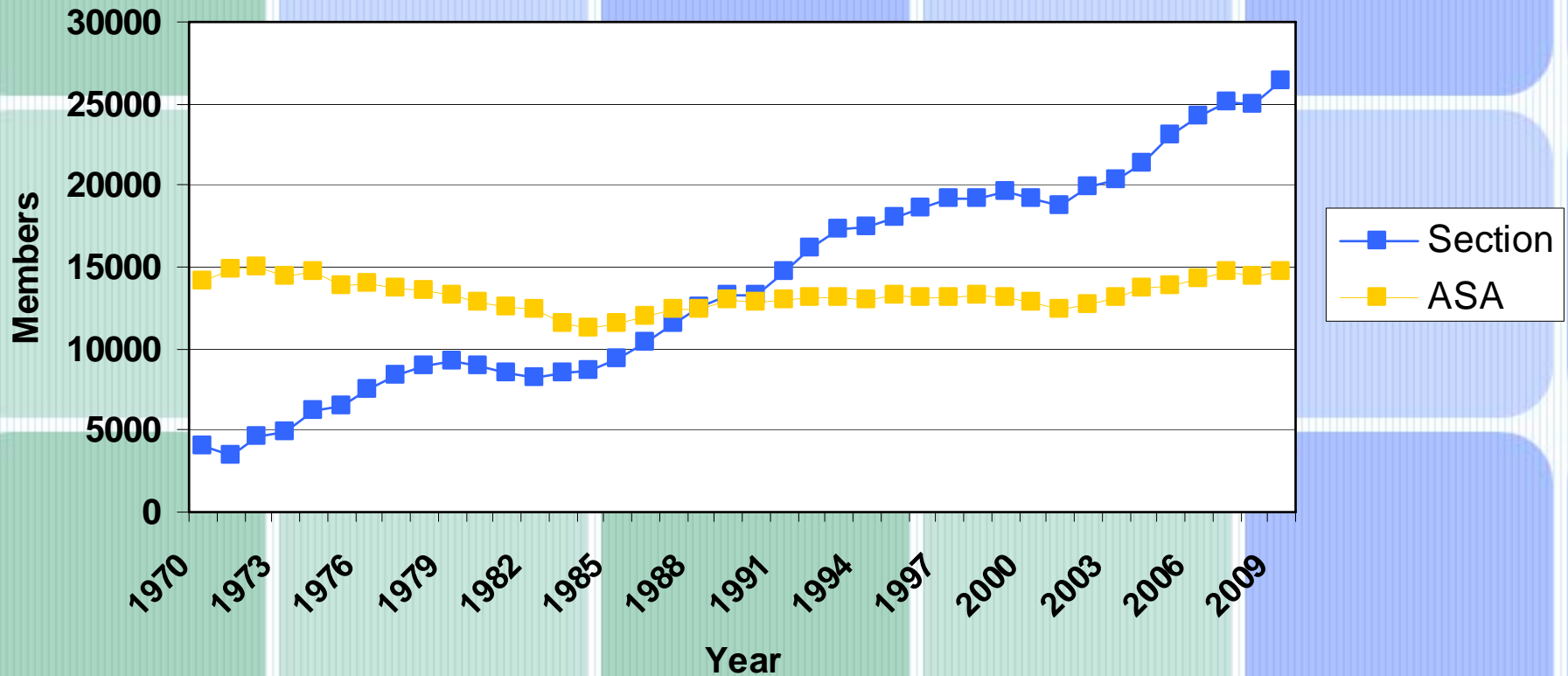
Background

- **Section concept launched in 1921**
- **Section structure revamped in late 1950s**



ASA and Sections 1970 – 2009

ASA Section Membership





A Few Facts About Sections

- **13,698 ASA members**
- **25,464 total section memberships**
- **There are currently 51 Sections. In 2001 there were 41.**

New Sections

Groups Currently Attempting to Form Sections

- **Consumers, Commodities and Consumption**
- **Qualitative Methodology**

Recent Groups Attempting to Form Sections

- **Astrosociology**
- **Interracial Relationships**
- **Narrative and Biographical Studies**

Questions ?



Section Services



Governance Department Services for Sections

- **Listservs**
- **Website hosting***
- **Elections***
- **Archiving section newsletters and other records**
- **Bill payments**
- **Quarterly financial statements**
- **Membership rosters**



Communications

- **Section Newsletters**
- **Listservs**
- **Websites**



Listserv Notes

- **Listservs are updated at the beginning of each month.**
- **Listservs reset in January.**
- **Troubleshooting; who to contact.**
- **Listserv and the Jobs Bank**



What can't Sections do?

- **Sections are not legal entities: They may not sign contracts.**
- **Public policy positions**
- **Journals and other publications***

Questions ?

Membership, Budget & Resources



Membership

- **Section budget allocation and annual meeting sessions shaped by Membership Numbers.**
- **Section Memberships Expire on December 31**
- **Sections that recruit early tend to do better at the end of the year.**
- **Updated membership stats are sent each month.**
- **We can send you lists of previous year's members to assist with retention.**



Annual Meeting Sessions

| # Members | # Sessions |
|---------------|------------|
| Less than 300 | 1 |
| 300-399 | 2 |
| 400-599 | 3 |
| 600-799 | 4 |
| 800-999 | 5 |
| 1000+ | 6 |



Income

- **Budget Allocations from ASA Council**
- **Additional Dues Assessments**
- **Donations and Contributions**
- **Royalties**
- **Bequests**
- **Grants**



Budget Allocations

Base allocation

- More than 300 members = \$1,000
- Less than 300 members (but more than 200) = (number section members – 100) multiplied by \$5
- Fewer than 200 members = \$500

In addition the ASA provides all sections with \$2 per member.



Budget Allocations (cont.)

For Example:

A Section has 556 members its allocation would be calculated the following way.

$$\mathbf{\$2,112 = (556 * \$2) + \$1,000}$$



Typical Section Expenses

- **Annual Meeting Receptions**
- **Awards**
- **Websites and Listservs hosted on non ASA servers**

Notes

- **Cannot buy memberships with ASA funds**
- **Reimbursements and payments**
ASA operates on a calendar year for its fiscal year
- **Debt and Money not spent at the end of a fiscal year carries over to the new year.**

Questions ?

Elections



Election Overview

- **Nominations typically chosen by an appointed committee.**
- **Guided by section bylaws**
- **All elected offices must be contested**
- **Broad representation of section members**
- **Eligibility and Associate Members**



Election Timeline

- **Slate of candidates by December 21st**
- **Biographical statements by January 31st**
- **Ballots are e-mailed (and/or mailed) in late April or early May**
- **Election closes around June 1st**



Bylaws Amendments

- **Step 1: Write new language**
- **Step 2: Section Council Approval**
- **Step 3: Send to the Sections Coordinator**
 - Step 4: Review by the Committee on Sections
 - Step 5: Section approval of any changes
 - Step 6: Approval by ASA Council
 - Step 7: Section Membership Votes
- **Step 8: New bylaws go into effect after Annual Meeting**

Questions ?



The Annual Meeting



Section Programming

- **What is required?**

Business Meeting-Dedicated slot for council/business meeting

- **Open vs. Invited Sessions**

- **Receptions**

Day 1 and Day 3



Section Programming

**Session slots are based on Section membership
Deadline to submit session information is
September 15**

Format:

Section Name

Session Type (Open or Invited)

Session Title

Session Description (optional)

**Session Organizer-their affiliation and email
address (must be a member)**



Section Days, 2012

Friday, August 17

Aging and the Life Course *
Altruism and Social Solidarity
Asia and Asian America
Children and Youth
Crime, Law, and Deviance*
Culture, Sociology of****
Economic Sociology**
Global and Transnational Sociology
Labor and Labor Movements
Marxist Sociology*
Methodology
Social Psychology**
Teaching and Learning in Sociology**

Saturday, August 18

Community and Urban Sociology*
Ethnomethodology
History of Sociology
Human Rights
Latina/o Sociology
Law, Sociology of
Mathematical Sociology
Mental Health, Sociology of
Political Sociology*
Population, Sociology of
Science, Knowledge, and Technology
Sex and Gender***

**one session must be scheduled on the following day*

***two sessions must be scheduled on the following day*

****three sessions must be scheduled on the following day*

*****four sessions must be scheduled on the following day*



Section Days, 2012

Sunday, August 19

Alcohol, Drugs, and Tobacco
Comparative and Historical Sociology*
Environment and Technology
Disability and Society
Family, Sociology of the*
Inequality, Poverty, and Mobility
Organizations, Occupations, & Work**
Peace, War, and Social Conflict
Racial and Ethnic Minorities**
Rationality and Society
Religion, Sociology of*
Sexualities, Sociology of
Sociological Practice & Public Sociology Theory~~

Monday, August 20

Animals and Society
Body and Embodiment
Collective Behavior & Social M'tmts~
Communication & Information Tech.
Education, Sociology of~~
Emotions, Sociology of
Evolution and Sociology
International Migration
Medical Sociology~~
Political Economy of the World System
Race, Gender, and Class~~
Sociology of Development+

**one session must be scheduled on the following day.*

***two sessions must be scheduled on the following day.*

~ one session must be scheduled on the previous day.

~~two sessions must be scheduled on the previous day.

Questions ?

The Committee on Sections



Members

| | | |
|-----------------------|---|--------------------------------------|
| Chloe Bird | – | RAND |
| Lingxin Hao | – | Johns Hopkins University |
| Barrett Lee | – | Pennsylvania State university |
| Omar McRoberts | – | University of Chicago |
| Diane Pike | – | Augsburg College |
| Sandra Smith | – | UC, Berkeley |
| Mark Tausig | – | University of Akron |



COS Responsibilities

- **Liaison between sections and the ASA Council**
- **Advises Council on sections**
- **Evaluates proposed new sections**
- **Reviews section annual reports**
- **Recommends discontinuation of sections**
- **Meets annually with chairs of sections**



Section Annual Reports

Due by October 15th

- Business meeting report**
- Section Council meeting report**
- Nominations procedures**
- Review of activities**
- Plans for the coming year**
- Copies of the section newsletters published electronically**
- May be submitted on paper or in electronic form**

Questions ?



Who to Contact

Section Questions

E-mail: Sections@asanet.org

Telephone: (202) 383-9005 ext 330

Meeting Questions

E-mail: Meetings@asanet.org

Telephone: (202) 383-9005 ext 305



Who to Contact

Membership Questions

E-mail: Membership@asanet.org

Telephone: (202) 383-9005 ext 330